

Anti-IL-1 beta Polyclonal Antibody 3

Product Details

Ig Type:	IgG
Reactivity:	Mouse (predicted:Human,Bee)
Molecular Weight:	Theoretical: 17/32 kDa. Actual: 37 kDa.
Purification:	Protein A purified

Applications

1. Sample:

Raw264.7 (Mouse) Cell Lysate at 30 µg

Liver (Mouse) Lysate at 40 µg

Primary: Anti-IL-1 Beta (TMAB-00934) at 1/500 dilution

Secondary: IRDye800CW Goat Anti-Rabbit IgG at 1/20000 dilution

Predicted band size: 17/30 kDa

Observed band size: 30 kDa

2. Paraformaldehyde-fixed, paraffin embedded (rat brain tissue); Antigen retrieval by boiling in sodium citrate buffer (pH6.0) for 15 min; Block endogenous peroxidase by 3% hydrogen peroxide for 20 min; Blocking buffer (normal goat serum) at 37°C for 30 min; Antibody incubation with (IL-1 Beta) Polyclonal Antibody, Unconjugated (TMAB-00934) at 1:400 overnight at 4°C, followed by a conjugated secondary for 20 min and DAB staining.

3. Blank control: THP-1. Primary Antibody (green line): Rabbit Anti-IL-1 Beta antibody (TMAB-00934)

Dilution: 2 µg/10⁶ cells;

Isotype Control Antibody (orange line): Rabbit IgG.

Secondary Antibody: Goat anti-rabbit IgG-FITC

Dilution: 0.5 µg/test.

Protocol

The cells were fixed with 4% PFA (10 min at room temperature) and then permeabilized with 0.1% PBST for 20 min at room temperature. The cells were then incubated in 5% BSA to block non-specific protein-protein interactions for 30 min at room temperature. Cells stained with Primary Antibody for 30 min at room temperature. The secondary antibody used for 40 min at room temperature.

4. Sample:

Lane 1: Recombinant mouse IL-1b protein, C-His

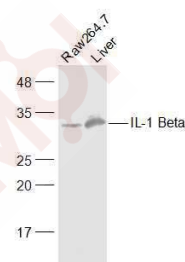
Primary: Anti-IL-1 Beta (TMAB-00934) at 1/1000 dilution

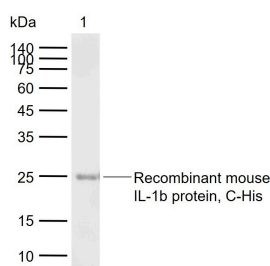
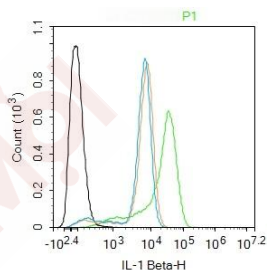
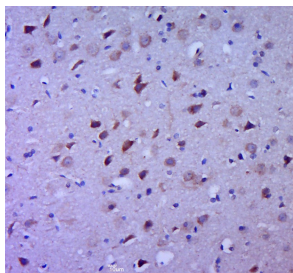
Secondary: IRDye800CW Goat Anti-Rabbit IgG at 1/20000 dilution

Predicted band size: 17/32 kDa

Observed band size: 25 kDa

Verified Activity:





Application: WB

Recommended WB=1:500-2000

Properties

Stability & Storage: Store at -20°C or -80°C for 12 months. Avoid repeated freeze-thaw cycles.

Shipping: Shipping with blue ice.

Antigen Details

Immunogen: KLH conjugated synthetic peptide: human IL-1 Beta

Antigen Species: Human

Gene ID: 3553

Uniprot ID: P01584

Biology Area: Inflammatory mediators, Interleukins, Obesity, SARS Coronavirus

Research Background

The protein encoded by this gene is a member of the interleukin 1 cytokine family. This cytokine is produced by activated macrophages as a proprotein, which is proteolytically processed to its active form by caspase 1 (CASP1/ICE). This cytokine is an important mediator of the inflammatory response, and is involved in a variety of cellular activities, including cell proliferation, differentiation, and apoptosis. The induction of cyclooxygenase-2 (PTGS2/COX2) by this cytokine in the central nervous system (CNS) is found to contribute to inflammatory pain hypersensitivity. This gene and eight other interleukin 1 family genes form a cytokine gene cluster on chromosome 2. [provided by RefSeq, Jul 2008].

Inhibitor · Natural Compounds · Compound Libraries · Recombinant Proteins

This product is for Research Use Only · Not for Human or Veterinary or Therapeutic Use

Tel:781-999-4286 E_mail:info@targetmol.com Address:34 Washington Street,Wellesley Hills,MA 02481