

## Anti-IL-1 beta Polyclonal Antibody 2

### Product Details

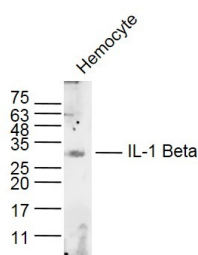
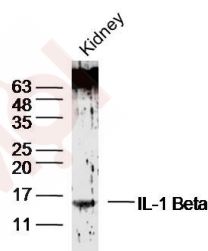
Ig Type: IgG  
Reactivity: Mouse (predicted:Human,Rat,Bee)  
Molecular Weight: Theoretical: 17/32 kDa.  
Purification: Protein A purified

### Applications

1. Sample: Kidney (Mouse) Lysate at 40 µg  
Primary: Anti-IL-1 Beta (TMAB-00933) at 1/300 dilution  
Secondary: IRDye800CW Goat Anti-Rabbit IgG at 1/20000 dilution  
Predicted band size: 17 kDa  
Observed band size: 16 kDa

Verified Activity:

2. Sample:  
Hemocyte (Mouse) Lysate at 40 µg  
Primary: Anti-IL-1 Beta (TMAB-00933) at 1/300 dilution  
Secondary: IRDye800CW Goat Anti-Rabbit IgG at 1/20000 dilution  
Predicted band size: 17 kDa  
Observed band size: 30 kDa



Application: WB  
Recommended WB: 1:500-2000

### Properties

Stability & Storage: Store at -20°C or -80°C for 12 months. Avoid repeated freeze-thaw cycles.

Shipping: Shipping with blue ice.

---

### Antigen Details

Immunogen: KLH conjugated synthetic peptide: human IL-1 Beta

Antigen Species: Human

Gene ID: 3553

Uniprot ID: P01584

Biology Area: Inflammatory mediators, Interleukins, Obesity, SARS Coronavirus

---

### Research Background

The protein encoded by this gene is a member of the interleukin 1 cytokine family. This cytokine is produced by activated macrophages as a proprotein, which is proteolytically processed to its active form by caspase 1 (CASP1/ICE). This cytokine is an important mediator of the inflammatory response, and is involved in a variety of cellular activities, including cell proliferation, differentiation, and apoptosis. The induction of cyclooxygenase-2 (PTGS2/COX2) by this cytokine in the central nervous system (CNS) is found to contribute to inflammatory pain hypersensitivity. This gene and eight other interleukin 1 family genes form a cytokine gene cluster on chromosome 2. [provided by RefSeq, Jul 2008].

**Inhibitor · Natural Compounds · Compound Libraries · Recombinant Proteins**

This product is for Research Use Only · Not for Human or Veterinary or Therapeutic Use

Tel: 781-999-4286 E\_mail: info@targetmol.com Address: 34 Washington Street, Wellesley Hills, MA 02481

---