

Anti-IL-1 beta Polyclonal Antibody

Product Details

Ig Type:	IgG
Reactivity:	Mouse,Human (predicted:Rat)
Molecular Weight:	Theoretical: 17/32 kDa. Actual: 35 kDa.
Purification:	Protein A purified

Applications

Sample:

Lane 1: Normal Mouse Raw264.7 cell lysates

Lane 2: Raw264.7 treated with 100ng/ml lipopolysaccharide (LPS) for 6h, then with 300ng/ml Brefeldin A added after 3 hours

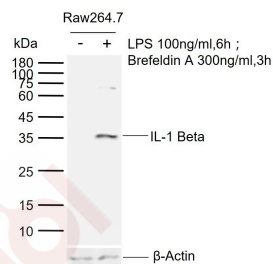
Verified Activity:

Primary: Anti-IL-1 Beta (TMAB-00932) at 1/1000 dilution

Secondary: IRDye800CW Goat Anti-Rabbit IgG at 1/20000 dilution

Predicted band size: 17/32 kDa

Observed band size: 35 kDa



Application: IF,IHC-Fr,IHC-P,WB

Recommended IF=1:500-2000; IHC-Fr=1:500-2000; IHC-P=1:500-2000; WB=1:500-2000

Properties

Stability & Storage: Store at -20°C or -80°C for 12 months. Avoid repeated freeze-thaw cycles.

Shipping: Shipping with blue ice.

Antigen Details

Immunogen:	KLH conjugated synthetic peptide: human IL-1beta
Antigen Species:	Human
Gene ID:	3553
Uniprot ID:	P01584
Biology Area:	Inflammatory mediators,Interleukins,Obesity,SARS Coronavirus

Research Background

The protein encoded by this gene is a member of the interleukin 1 cytokine family. This cytokine is produced by activated macrophages as a proprotein, which is proteolytically processed to its active form by caspase 1

A DRUG SCREENING EXPERT

(CASP1/ICE). This cytokine is an important mediator of the inflammatory response, and is involved in a variety of cellular activities, including cell proliferation, differentiation, and apoptosis. The induction of cyclooxygenase-2 (PTGS2/COX2) by this cytokine in the central nervous system (CNS) is found to contribute to inflammatory pain hypersensitivity. This gene and eight other interleukin 1 family genes form a cytokine gene cluster on chromosome 2. [provided by RefSeq, Jul 2008].

Inhibitor · Natural Compounds · Compound Libraries · Recombinant Proteins

This product is for Research Use Only · Not for Human or Veterinary or Therapeutic Use

Tel:781-999-4286 E_mail:info@targetmol.com Address:34 Washington Street,Wellesley Hills,MA 02481