

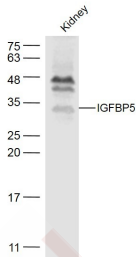
Anti-IGFBP-5 Polyclonal Antibody

Product Details

Ig Type:	IgG
Reactivity:	Human, Mouse (predicted: Rat, Chicken, Dog, Pig, Cow, Horse, Sheep)
Molecular Weight:	Theoretical: 30 kDa. Actual: 30 kDa.
Purification:	Protein A purified

Applications

Sample:	Kidney (Mouse) Lysate at 40 µg
Verified Activity:	Primary: Anti-IGFBP5 (TMAB-00924) at 1/300 dilution Secondary: IRDye800CW Goat Anti-Rabbit IgG at 1/20000 dilution Predicted band size: 30 kDa Observed band size: 30 kDa



Application:	WB
Recommended	WB: 1:500-2000

Properties

Stability & Storage:	Store at -20°C or -80°C for 12 months. Avoid repeated freeze-thaw cycles.
Shipping:	Shipping with blue ice.

Antigen Details

Immunogen:	KLH conjugated synthetic peptide: human IGFBP5
Antigen Species:	Human
Gene ID:	3488
Uniprot ID:	P24593
Synonyms:	IBP5; insulin-like growth factor binding protein 5
Biology Area:	Insulin / Insulin-like, Lipid Signaling

Research Background

IGFBP5 is one of a family of proteins that bind to insulin-like growth factors (IGFs). IGFBP5 is a multifunctional protein which acts not only as a traditional binding protein but also functions as a growth factor independent of IGFs to stimulate bone formation. Currently there are seven named IGF-BPs that form high affinity complexes with both IGFI

A DRUG SCREENING EXPERT

and IGFII. IGFBP5 is the major IGF-binding protein present in bone tissue and helps potentiate the action of IGF1 on smooth muscle cells, fibroblasts or osteoblasts. Data shows that IGFBP5 acts as a growth inhibitor and pro-apoptotic agent in breast cancer cells. IGFBP5 overexpressing mice show an increase in neonatal mortality, reduced female fertility, whole-body growth inhibition and retarded muscle development.

Function : IGF-binding proteins prolong the half-life of the IGFs and have been shown to either inhibit or stimulate the growth promoting effects of the IGFs on cell culture. They alter the interaction of IGFs with their cell surface receptors.

Inhibitor · Natural Compounds · Compound Libraries · Recombinant Proteins

This product is for Research Use Only · Not for Human or Veterinary or Therapeutic Use

Tel:781-999-4286 E_mail:info@targetmol.com Address:34 Washington Street,Wellesley Hills,MA 02481