

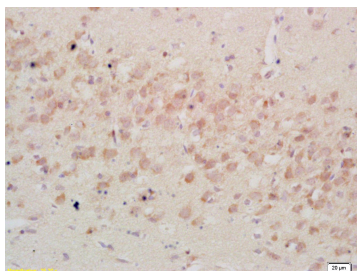
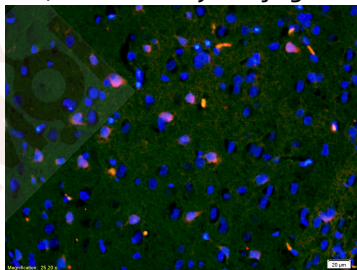
Anti-IGFBP-3 Polyclonal Antibody

Product Details

Ig Type:	IgG
Reactivity:	Rat (predicted:Human,Mouse)
Molecular Weight:	Theoretical: 30-35 kDa.
Purification:	Protein A purified

Applications

- Verified Activity:
1. Tissue/cell: rat brain tissue;4% Paraformaldehyde-fixed and paraffin-embedded; Antigen retrieval: citrate buffer (0.01M, pH6.0), Boiling bathing for 15 min; Blocking buffer (normal goat serum) at 37°C for 20 min; Incubation: Anti-IGFBP3 Polyclonal Antibody, Unconjugated (TMAB-00923) 1:200, overnight at 4°C; The secondary antibody was Goat Anti-Rabbit IgG, Cy3 conjugated used at 1:200 dilution for 40 minutes at 37°C. DAPI (5 µg/ml,blue) was used to stain the cell nucleus.
 2. Tissue/cell: rat brain tissue; 4% Paraformaldehyde-fixed and paraffin-embedded; Antigen retrieval: citrate buffer (0.01M, pH6.0), Boiling bathing for 15 min; Block endogenous peroxidase by 3% Hydrogen peroxide for 30 min; Blocking buffer (normal goat serum) at 37°C for 20 min; Incubation: Anti-IGFBP3 Polyclonal Antibody, Unconjugated (TMAB-00923) 1:200, overnight at 4°C, followed by conjugation to the secondary antibody and DAb staining.



Application:	IF,IHC-Fr,IHC-P
Recommended	IHC-P: 1:100-500; IHC-Fr: 1:100-500; IF: 1:100-500

Properties

Stability & Storage: Store at -20°C or -80°C for 12 months. Avoid repeated freeze-thaw cycles.

Shipping: Shipping with blue ice.

Antigen Details

Immunogen: KLH conjugated synthetic peptide: human IGFBP3

Antigen Species: Human

Gene ID: 3486

Uniprot ID: P17936

Synonyms: IGFBP3;IBP3;BP-53;insulin-like growth factor binding protein 3

Biology Area: Insulin and insulin-like,Angiogenic inhibitory factors,Angiogenic Factors,Apoptosis,Diabetes associated,Associated Proteins,Growth factors and hormones ELISA kits,Insulin / Insulin-like

Research Background

This gene is a member of the insulin-like growth factor binding protein (IGFBP) family and encodes a protein with an IGFBP domain and a thyroglobulin type-I domain. The protein forms a ternary complex with insulin-like growth factor acid-labile subunit (IGFALS) and either insulin-like growth factor (IGF) I or II. In this form, it circulates in the plasma, prolonging the half-life of IGFs and altering their interaction with cell surface receptors. Alternate transcriptional splice variants, encoding different isoforms, have been characterized. [provided by RefSeq, Jul 2008]

Inhibitor · Natural Compounds · Compound Libraries · Recombinant Proteins

This product is for Research Use Only · Not for Human or Veterinary or Therapeutic Use

Tel:781-999-4286 E_mail:info@targetmol.com Address:34 Washington Street,Wellesley Hills,MA 02481
