

## Anti-IGFBP2 Polyclonal Antibody

### Product Details

Ig Type:	IgG
Reactivity:	Human (predicted:Mouse,Rat)
Molecular Weight:	Theoretical: 36 kDa. Actual: 36 kDa.
Purification:	Protein A purified

### Applications

#### Sample:

Lane 1: Human MOLT4 cell lysates

Lane 2: Human MCF-7 cell lysates

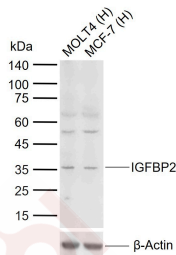
#### Verified Activity:

Primary: Anti-IGFBP2 (TMAB-00922) at 1/1000 dilution

Secondary: IRDye800CW Goat Anti-Rabbit IgG at 1/20000 dilution

Predicted band size: 36 kDa

Observed band size: 36 kDa



Application: IF,IHC-Fr,WB

Recommended WB: 1:500-2000; IHC-Fr: 1:100-500; IF: 1:100-500

### Properties

Stability & Storage: Store at -20°C or -80°C for 12 months. Avoid repeated freeze-thaw cycles.

Shipping: Shipping with blue ice.

### Antigen Details

Immunogen:	KLH conjugated synthetic peptide: human IGFBP2
Antigen Species:	Human
Gene ID:	3485
Uniprot ID:	P18065
Synonyms:	AI255832;IGFBP-2;BP2;mIGFBP-2;IBP-2;IGF-BP53;IGFBP2
Biology Area:	Insulin and insulin-like,Extracellular matrix,Insulin / Insulin-like

### Research Background

IGFBP2 (insulin-like growth factor binding protein 2) is a member of the ISGBP family which bind various IGFs. IGFBP2 is overexpressed in a wide spectrum of other cancers, including glioma, prostate cancer, synovial sarcoma,

## A DRUG SCREENING EXPERT

---

neuroblastoma, colon cancer, adrenocortical cancer, lung cancer, Wilms' tumor, and hepatoblastoma. The overexpression of IGFBP2 also correlates with the aggressiveness of some tumors. IGFBP2 activates the expression of matrix metalloprotease 2, which contributes to cell invasiveness

**Inhibitor · Natural Compounds · Compound Libraries · Recombinant Proteins**

This product is for Research Use Only · Not for Human or Veterinary or Therapeutic Use

Tel:781-999-4286 E\_mail:info@targetmol.com Address:34 Washington Street,Wellesley Hills,MA 02481