

## Anti-IGF2/IGF-II Polyclonal Antibody

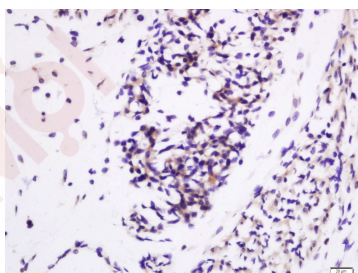
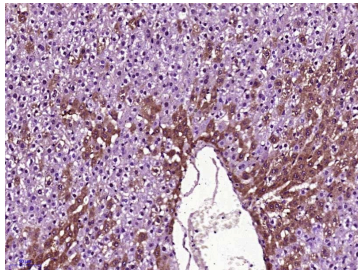
### Product Details

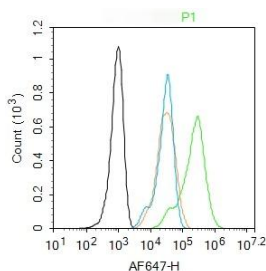
Ig Type:	IgG
Reactivity:	Human,Rat (predicted:Mouse,Dog,Pig,Cow,Rabbit,Sheep)
Molecular Weight:	Theoretical: 7.4 kDa.
Purification:	Protein A purified

### Applications

1. Paraformaldehyde-fixed, paraffin embedded (Rat liver); Antigen retrieval by boiling in sodium citrate buffer (pH6.0) for 15 min; Block endogenous peroxidase by 3% hydrogen peroxide for 20 min; Blocking buffer (normal goat serum) at 37°C for 30 min; Antibody incubation with (IGF II) Polyclonal Antibody, Unconjugated (TMAB-00920) at 1:400 overnight at 4°C, followed by operating according to SP Kit (Rabbit) instructions and DAB staining.
2. Tissue/cell: rat placenta tissue; 4% Paraformaldehyde-fixed and paraffin-embedded; Antigen retrieval: citrate buffer (0.01M, pH6.0), Boiling bathing for 15 min; Block endogenous peroxidase by 3% Hydrogen peroxide for 30 min; Blocking buffer (normal goat serum) at 37°C for 20 min; Incubation: Anti-IGF II Polyclonal Antibody, Unconjugated (TMAB-00920) 1:200, overnight at 4°C, followed by conjugation to the secondary antibody and DAB staining.
3. Blank control: HepG2. Primary Antibody (green line): Rabbit Anti-IGF II antibody (TMAB-00920)  
Dilution: 1 µg/10<sup>6</sup> cells;  
Isotype Control Antibody (orange line): Rabbit IgG.  
Secondary Antibody: Goat anti-rabbit IgG-AF647  
Dilution: 1 µg/test.
- Protocol  
The cells were fixed with 4% PFA (10 min at room temperature) and then permeabilized with 0.1% PBST for 20 min at room temperature. The cells were then incubated in 5% BSA to block non-specific protein-protein interactions for 30 min at room temperature. Cells stained with Primary Antibody for 30 min at room temperature. The secondary antibody used for 40 min at room temperature.

Verified Activity:





Application: FCM,IF,IHC-Fr,IHC-P

Recommended IHC-P: 1:100-500; IHC-Fr: 1:100-500; IF: 1:100-500; FCM: 1ug/Test

### Properties

Stability & Storage: Store at -20°C or -80°C for 12 months. Avoid repeated freeze-thaw cycles.

Shipping: Shipping with blue ice.

### Antigen Details

Immunogen: KLH conjugated synthetic peptide: human IGF2

Antigen Species: Human

Gene ID: 3481

Uniprot ID: P01344

Synonyms: Somatomedin A;PP1446;IGF2;Somatomedin-A;IGF-II

Biology Area: Insulin and insulin-like,Growth hormones,Growth factors and hormones ELISA kits,Insulin / Insulin-like

### Research Background

The IGF2 gene encodes a member of the insulin family of polypeptide growth factors that is involved in development and growth. It is expressed only from the paternally inherited allele and is an imprinted gene which is a candidate gene for eating disorders. There is a read-through, INS-IGF2, which aligns to this gene at the 3' region and to the upstream INS gene at the 5' region. Two alternatively spliced transcript variants encoding the same protein have been found for this gene. Insulin Like Growth Factor-2 (IGF-2) is a polypeptide growth factor, which stimulates the proliferation of a wide range of cell types.

**Inhibitor · Natural Compounds · Compound Libraries · Recombinant Proteins**

This product is for Research Use Only· Not for Human or Veterinary or Therapeutic Use

Tel:781-999-4286 E\_mail:info@targetmol.com Address:34 Washington Street,Wellesley Hills,MA 02481