

Anti-IGF1R/CD221 Polyclonal Antibody 2

Product Details

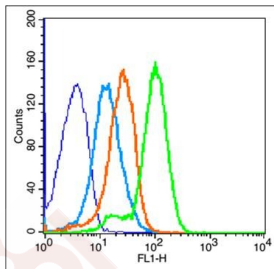
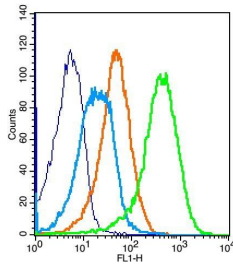
Ig Type: IgG
Reactivity: Mouse (predicted:Human,Rat,Pig,Cow,Sheep)
Molecular Weight: Theoretical: 69/150 kDa. Actual: 69 kDa.
Purification: Protein A purified

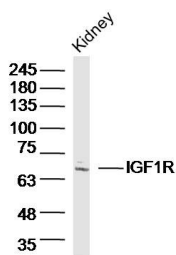
Applications

1. Positive control: (mo) splenocytes (2% Paraformaldehyde-fixed)
Isotype Control Antibody: Rabbit IgG;
Dilution: 1 μ g in 100 μ L 1 X PBS containing 0.5% BSA
Secondary Antibody: Goat anti-rabbit IgG-FITC;
Dilution: 1:200 in 1 X PBS containing 0.5% BSA
Primary Antibody: rabbit Anti-IGF1R TMAB-00919;
Dilution: 1 μ g in 100 μ L 1X PBS containing 0.5% BSA

2. Blank control (blue): Mouse Spleen (fixed with 2% paraformaldehyde for 10 min at 37°C).
Primary Antibody: Rabbit Anti-IGF1R antibody (TMAB-00919,Green); Dilution: 1 μ g in 100 μ L 1X PBS containing 0.5% BSA; Isotype Control Antibody: Rabbit Igg (orange),used under the same conditions; Secondary Antibody: Goat anti-rabbit IgG-FITC (white blue), Dilution: 1:200 in 1 X PBS containing 0.5% BSA.

3. Sample: Kidney (Mouse) Lysate at 40 μ g
Primary: Anti-IGF1R (TMAB-00919) at 1/300 dilution
Secondary: IRDye800CW Goat Anti-Rabbit IgG at 1/20000 dilution
Predicted band size: 69/150 kDa
Observed band size: 69 kDa





Application: FCM,WB

Recommended WB: 1:500-2000; FCM: 1µg/Test

Properties

Stability & Storage: Store at -20°C or -80°C for 12 months. Avoid repeated freeze-thaw cycles.

Shipping: Shipping with blue ice.

Antigen Details

Immunogen: KLH conjugated synthetic peptide: human IGF1R/CD221 beta chain

Antigen Species: Human

Gene ID: 3480

Uniprot ID: P08069

Synonyms: IGFIR;JTK13;IGF-I R;CD221;IGF1 Receptor;IGFR;insulin-like growth factor 1 receptor

Biology Area: Insulin / Insulin-like,Aging,Insulin and insulin-like

Research Background

This receptor binds insulin-like growth factor 1 (IGF1) with a high affinity and IGF2 with a lower affinity. It has a tyrosine-protein kinase activity, which is necessary for the activation of the IGF1-stimulated downstream signaling cascade. When present in a hybrid receptor with INSR, binds IGF1. PubMed:12138094 shows that hybrid receptors composed of IGF1R and INSR isoform Long are activated with a high affinity by IGF1, with low affinity by IGF2 and not significantly activated by insulin, and that hybrid receptors composed of IGF1R and INSR isoform Short are activated by IGF1, IGF2 and insulin. In contrast, PubMed:16831875 shows that hybrid receptors composed of IGF1R and INSR isoform Long and hybrid receptors composed of IGF1R and INSR isoform Short have similar binding characteristics, both bind IGF1 and have a low affinity for insulin.

Inhibitor · Natural Compounds · Compound Libraries · Recombinant Proteins

This product is for Research Use Only · Not for Human or Veterinary or Therapeutic Use

Tel:781-999-4286 E_mail:info@targetmol.com Address:34 Washington Street,Wellesley Hills,MA 02481
