

## Anti-IGF1R/CD221 Polyclonal Antibody

### Product Details

Ig Type:	IgG
Reactivity:	Human, Mouse (predicted: Rat, Dog, Pig, Cow, Horse, Rabbit, Sheep)
Molecular Weight:	Theoretical: 78/150 kDa.
Purification:	Protein A purified

### Applications

1. Positive control: (mo) splenocytes (2% Paraformaldehyde-fixed)

Isotype Control Antibody

Antibody: Rabbit IgG;

Supplier: Cell Signaling Technology;

Dilution: 1  $\mu$ g in 100  $\mu$ L 1 X PBS containing 0.5% BSA

Secondary Antibody

Antibody: Goat anti-rabbit IgG-FITC;

Supplier: Cell Signaling Technology;

Dilution: 1:200 in 1 X PBS containing 0.5% BSA

Primary Antibody

Supplier: Bioss;

Verified Activity: Supplier catalog number: TMAB-00918;

Dilution: 1  $\mu$ g in 100  $\mu$ L 1X PBS containing 0.5% BSA

2. Blank control: MCF7. Primary Antibody (green line): Rabbit Anti-IGF1R antibody (TMAB-00918)

Dilution: 2  $\mu$ g/ $10^6$  cells;

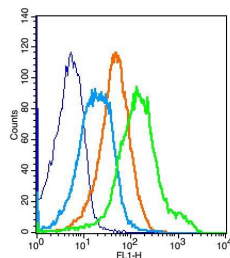
Isotype Control Antibody (orange line): Rabbit IgG.

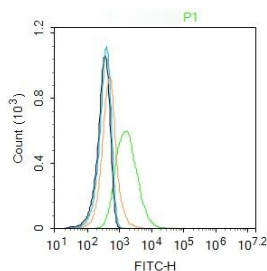
Secondary Antibody: Goat anti-rabbit IgG-FITC

Dilution: 1  $\mu$ g/test.

Protocol

The cells were incubated in 5% BSA to block non-specific protein-protein interactions for 30 min at room temperature. Cells stained with Primary Antibody for 30 min at room temperature. The secondary antibody used for 40 min at room temperature.





Application: FCM

Recommended FCM: 1µg/Test

## Properties

Stability & Storage: Store at -20°C or -80°C for 12 months. Avoid repeated freeze-thaw cycles.

Shipping: Shipping with blue ice.

## Antigen Details

Immunogen: KLH conjugated synthetic peptide: human IGF-1R alpha chain

Antigen Species: Human

Gene ID: 3480

Uniprot ID: P08069

Synonyms: IGF-1 R;IGF1 Receptor;IGFR;JTK13;IGFIR;insulin-like growth factor 1 receptor;CD221

Biology Area: Insulin / Insulin-like,Aging,Insulin and insulin-like

## Research Background

This receptor binds insulin-like growth factor 1 (IGF1) with a high affinity and IGF2 with a lower affinity. It has a tyrosine-protein kinase activity, which is necessary for the activation of the IGF1-stimulated downstream signaling cascade. When present in a hybrid receptor with INSR, binds IGF1. PubMed:12138094 shows that hybrid receptors composed of IGF1R and INSR isoform Long are activated with a high affinity by IGF1, with low affinity by IGF2 and not significantly activated by insulin, and that hybrid receptors composed of IGF1R and INSR isoform Short are activated by IGF1, IGF2 and insulin. In contrast, PubMed:16831875 shows that hybrid receptors composed of IGF1R and INSR isoform Long and hybrid receptors composed of IGF1R and INSR isoform Short have similar binding characteristics, both bind IGF1 and have a low affinity for insulin.

**Inhibitor · Natural Compounds · Compound Libraries · Recombinant Proteins**

This product is for Research Use Only · Not for Human or Veterinary or Therapeutic Use

Tel:781-999-4286

E\_mail:info@targetmol.com

Address:34 Washington Street,Wellesley Hills,MA 02481