

Anti-IGF1/IGF-I Polyclonal Antibody 2

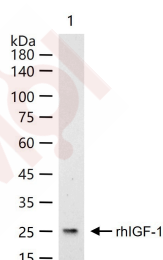
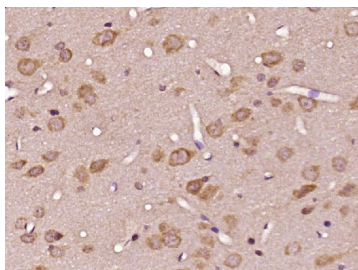
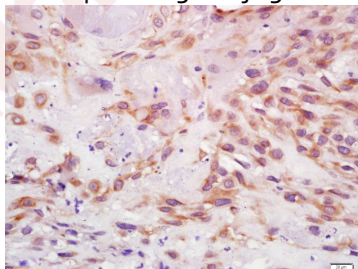
Product Details

| | |
|-------------------|--|
| Ig Type: | IgG |
| Reactivity: | Human,Rat (predicted:Mouse,Dog,Pig,Cow,Rabbit,Sheep) |
| Molecular Weight: | Theoretical: 7.7/21 kDa. Actual: 24 kDa. |
| Purification: | Protein A purified |

Applications

1. Tissue/cell: human placenta tissue; 4% Paraformaldehyde-fixed and paraffin-embedded; Antigen retrieval: citrate buffer (0.01M, pH6.0), Boiling bathing for 15 min; Block endogenous peroxidase by 3% Hydrogen peroxide for 30 min; Blocking buffer (normal goat serum) at 37°C for 20 min; Incubation: Anti-IGF I Polyclonal Antibody, Unconjugated (TMAB-00917) 1:200, overnight at 4°C, followed by conjugation to the secondary antibody and DAb staining.
2. Paraformaldehyde-fixed, paraffin embedded (Rat brain); Antigen retrieval by boiling in sodium citrate buffer (pH6.0) for 15 min; Block endogenous peroxidase by 3% hydrogen peroxide for 20 min; Blocking buffer (normal goat serum) at 37°C for 30 min; Antibody incubation with (IGF I) Polyclonal Antibody, Unconjugated (TMAB-00917) at 1:400 overnight at 4°C, followed by operating according to SP Kit (Rabbit) instructions and DAB staining.
3. 20 ng rhIGF-1 protein, Trx & His per Lane probed with IGF 1 polyclonal antibody respectively, unconjugated (TMAB-00917) at 1:1000 dilution and 4°C overnight incubation. Followed by corresponding conjugated secondary antibody incubation at RT for 60 min.

Verified Activity:



A DRUG SCREENING EXPERT

Application: IF,IHC-Fr,IHC-P,WB

Recommended WB: 1:500-2000; IHC-P: 1:100-500; IHC-Fr: 1:100-500; IF: 1:100-500

Properties

Stability & Storage: Store at -20°C or -80°C for 12 months. Avoid repeated freeze-thaw cycles.

Shipping: Shipping with blue ice.

Antigen Details

Immunogen: KLH conjugated synthetic peptide: human IGF I

Antigen Species: Human

Gene ID: 3479

Uniprot ID: P05019

Synonyms: MGF;insulin-like growth factor 1;IGF-1;IGF1A;IGF-I;IGF-I;somatomedin C;IGF1

Biology Area: Insulin and insulin-like,Aging,Growth hormones,Growth factors and hormones ELISA kits,Insulin / Insulin-like

Research Background

The protein encoded by this gene is similar to insulin in function and structure and is a member of a family of proteins involved in mediating growth and development. The encoded protein is processed from a precursor, bound by a specific receptor, and secreted. Defects in this gene are a cause of insulin-like growth factor I deficiency. Several transcript variants encoding different isoforms have been found for this gene.[provided by RefSeq, Mar

Inhibitor · Natural Compounds · Compound Libraries · Recombinant Proteins

This product is for Research Use Only · Not for Human or Veterinary or Therapeutic Use

Tel:781-999-4286 E_mail:info@targetmol.com Address:34 Washington Street,Wellesley Hills,MA 02481