

Anti-IFN gamma Polyclonal Antibody

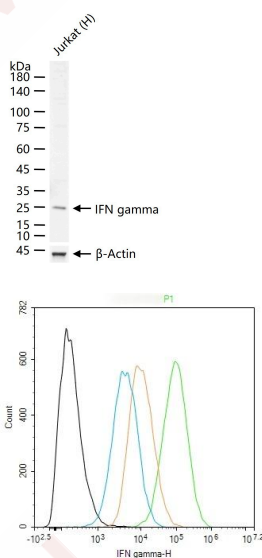
Product Details

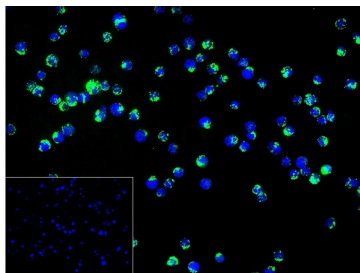
Ig Type:	IgG
Reactivity:	Human (predicted:Mouse,Rat)
Molecular Weight:	Theoretical: 15 kDa. Actual: 24 kDa.
Purification:	Protein A purified

Applications

Verified Activity:

- 25 µg total protein per Lane of various lysates probed with IFN gamma polyclonal antibody, unconjugated (TMAB-00910) at 1:500 dilution and 4°C overnight incubation. Followed by conjugated secondary antibody incubation at RT for 60 min.
- The Jurkat (Treated with PMA (25 ng/mL, 6 h) and ionomycin (1 µg/mL, 6 h), BFA (5 µg/ml, last 5 h)) (H) cells were fixed with 4% PFA (10 min at room temperature) and then permeabilized with 90% ice-cold methanol for 20 min at -20°C, the cells then were incubated in 5% BSA to block non-specific protein-protein interactions (30 min at room temperature). Primary Antibody (green): Rabbit Anti-IFN gamma antibody (TMAB-00910;1:100); Secondary Antibody (white blue): Goat anti-Rabbit IgG-BF488: 1 µg/test. Isotype Control (orange): Rabbit IgG. Blank control (black): PBS.
- 4% Paraformaldehyde-fixed Jurkat (Treated with PMA (25 ng/mL, 6 h) and ionomycin (1 µg/mL, 6 h), BFA (5 µg/ml, last 5 h))(H) cell; Triton X-100 at RT for 20 min; Antibody incubation with (IFN gamma) polyclonal Antibody, unconjugated (TMAB-00910) 1:100, 90 min at 37°C; followed by conjugated Goat Anti-Rabbit IgG antibody (green) at 37°C for 90 min, DAPI (blue) was used to stain the cell nucleus. PBS instead of the primary antibody was used as the blank control.





Application: FCM,ICC/IF,WB

Recommended FCM=1:50-100; ICC/IF=1:50-200; WB=1:500-2000

Properties

Stability & Storage: Store at -20°C or -80°C for 12 months. Avoid repeated freeze-thaw cycles.

Shipping: Shipping with blue ice.

Antigen Details

Immunogen: KLH conjugated synthetic peptide: human IFN gamma

Antigen Species: Human

Gene ID: 3458

Uniprot ID: P01579

Synonyms: interferon, gamma;IFN γ ;interferon, γ

Biology Area: Interferons,Regulatory T Cells,Interferons,Interferon gamma

Research Background

Mammalian Interferon gamma is mainly produced by T lymphocytes and NK cells. It is a pleiotropic cytokine involved in the regulation of nearly all phases of immune and inflammatory responses,including the activation, growth and differentiation of T cell, B cells, macrophages, NK cells and other cell types such as endothelial cells and fibroblasts. It has weak antiviral and antiproliferative activity, and potentiates the antiviral and anti tumor effects of IFN alpha / beta (type I interferon). It is upregulated by IL2, FGF basic, EGF and downregulated by vitamin D3 or DMN. Labile at pH 2.

Inhibitor · Natural Compounds · Compound Libraries · Recombinant Proteins

This product is for Research Use Only· Not for Human or Veterinary or Therapeutic Use

Tel:781-999-4286 E_mail:info@targetmol.com Address:34 Washington Street,Wellesley Hills,MA 02481