

## Anti-HRH1 Polyclonal Antibody

### Product Details

Ig Type: IgG  
Reactivity: Human (predicted:Mouse,Rat,Dog,Pig,Cow)  
Molecular Weight: Theoretical: 54 kDa. Actual: 56 kDa.  
Purification: Protein A purified

### Applications

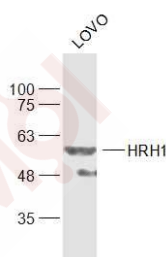
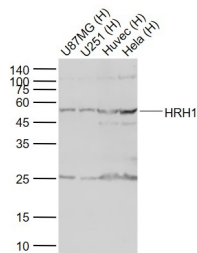
#### 1. Sample:

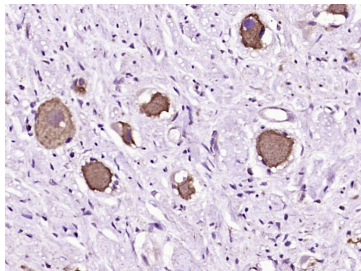
Lane 1: U87MG (Human) Cell Lysate at 30 µg  
Lane 2: U251 (Human) Cell Lysate at 30 µg  
Lane 3: Huvec (Human) Cell Lysate at 30 µg  
Lane 4: Hela (Human) Cell Lysate at 30 µg  
Primary: Anti-HRH1 (TMAB-00889) at 1/1000 dilution  
Secondary: IRDye800CW Goat Anti-Rabbit IgG at 1/20000 dilution  
Predicted band size: 56 kDa  
Observed band size: 56 kDa

#### 2. Sample:

Verified Activity: LOVO (Human) Cell Lysate at 30 µg  
Primary: Anti-HRH1 (TMAB-00889) at 1/1000 dilution  
Secondary: IRDye800CW Goat Anti-Rabbit IgG at 1/20000 dilution  
Predicted band size: 54 kDa  
Observed band size: 54 kDa

3. Paraformaldehyde-fixed, paraffin embedded (Human ovarian cancer); Antigen retrieval by boiling in sodium citrate buffer (pH6.0) for 15 min; Block endogenous peroxidase by 3% hydrogen peroxide for 20 min; Blocking buffer (normal goat serum) at 37°C for 30 min; Antibody incubation with (HRH1) Polyclonal Antibody, Unconjugated (TMAB-00889) at 1:400 overnight at 4°C, followed by operating according to SP Kit (Rabbit) instructions and DAB staining.





Application: IF,IHC-Fr,IHC-P,WB

Recommended WB: 1:500-2000; IHC-P: 1:100-500; IHC-Fr: 1:100-500; IF: 1:100-500

### Properties

Stability & Storage: Store at -20°C or -80°C for 12 months. Avoid repeated freeze-thaw cycles.

Shipping: Shipping with blue ice.

### Antigen Details

Immunogen: KLH conjugated synthetic peptide: human HRH1

Antigen Species: Human

Gene ID: 3269

Uniprot ID: P35367

Synonyms: H1R;Histamine H1 receptor;HRH1;H1-R;HH1R

Biology Area: Allergens,Macrophage / Inflamm.,Hormones,GPCR

### Research Background

Histamine is a ubiquitous messenger molecule released from mast cells, enterochromaffin-like cells, and neurons. Its various actions are mediated by histamine receptors H1, H2, H3 and H4. This gene was thought to be intronless until recently. The protein encoded by this gene is an integral membrane protein and belongs to the G protein-coupled receptor superfamily. It mediates the contraction of smooth muscles, the increase in capillary permeability due to contraction of terminal venules, the release of catecholamine from adrenal medulla, and neurotransmission in the central nervous system. Multiple alternatively spliced variants, encoding the same protein, have been identified. [provided by RefSeq, Jul 2008].

**Inhibitor · Natural Compounds · Compound Libraries · Recombinant Proteins**

This product is for Research Use Only · Not for Human or Veterinary or Therapeutic Use

Tel:781-999-4286 E\_mail:info@targetmol.com Address:34 Washington Street,Wellesley Hills,MA 02481