

Anti-HPV16 E7 Polyclonal Antibody 2

Product Details

Ig Type:	IgG
Reactivity:	HPV16
Molecular Weight:	Theoretical: 11 kDa. Actual: 50 kDa.
Purification:	Protein A purified

Applications

1. Sample:

hela (Human) Cell Lysate at 30 µg
mcf-7 (Human) Cell Lysate at 30 µg
mda-mb-231 (Human) Cell Lysate at 30 µg
siha (Human) Cell Lysate at 30 µg
recombinant HPV16-E7 protein 100 ng
recombinant HPV16-E7 protein 50 ng
Primary: Anti-HPV16 E7 (TMAB-00886) at 1/1000 dilution
Secondary: IRDye800CW Goat Anti-Rabbit IgG at 1/20000 dilution
Predicted band size: 11 kD
Observed band size: 17-20 kD
HPV16-E7 band size: 45 kDa

2. Sample:

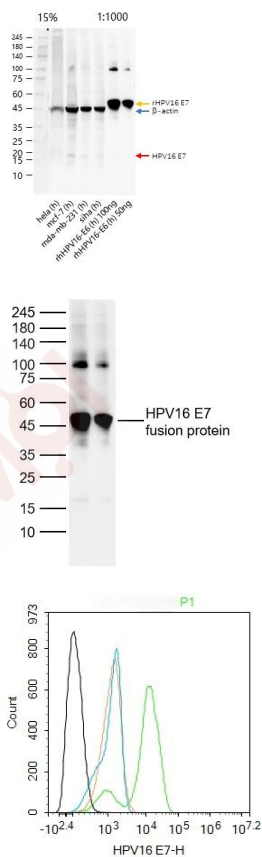
Lane 1: HPV16 E7 fusion protein 0.1 µg Lysates
Lane 2: HPV16 E7 fusion protein 0.05 µg Lysates
Primary: Anti-HPV16 E7 (TMAB-00886) at 1/1000 dilution
Secondary: IRDye800CW Goat Anti-Rabbit IgG at 1/20000 dilution
Predicted band size: 11 kDa
Observed band size: 50 kDa

Verified Activity:

3. Blank control (black line): Hela.
Primary Antibody (green line): Rabbit Anti-HPV16 E7 antibody (TMAB-00886)
Dilution: 1 µg/Test;
Secondary Antibody (white blue line): Goat anti-rabbit IgG-AF488
Dilution: 0.5 µg/Test.

Isotype control (orange line): Normal Rabbit IgG
Protocol

The cells were fixed with 4% PFA (10 min at room temperature) and then permeabilized with 90% ice-cold methanol for 20 min at -20°C, The cells were then incubated in 5% BSA to block non-specific protein-protein interactions for 30 min at room temperature. Cells stained with Primary Antibody for 30 min at room temperature. The secondary antibody used for 40 min at room temperature.



Application: FCM,WB

Recommended WB: 1:500-2000; FCM: 1ug/Test

Properties

Stability & Storage: Store at -20°C or -80°C for 12 months. Avoid repeated freeze-thaw cycles.

Shipping: Shipping with blue ice.

Antigen Details

Immunogen: KLH conjugated synthetic peptide: HPV16 E7 protein

Synonyms: Human Papilloma Virus;E7;Human Papillomavirus 16(E7);E7 protein(HPV16);HPV 16 E7 protein; HPV16 E7 protein;Protein E7;HPV16 E7;HPV16-E7;Human papillomavirus type 16 E7;VE7_HP16

Inhibitor · Natural Compounds · Compound Libraries · Recombinant Proteins

This product is for Research Use Only · Not for Human or Veterinary or Therapeutic Use

Tel:781-999-4286 E_mail:info@targetmol.com Address:34 Washington Street,Wellesley Hills,MA 02481