

Anti-HPV16 E6 / HPV18 E6 Polyclonal Antibody

Product Details

Ig Type:	IgG
Reactivity:	HPV16,HPV18
Molecular Weight:	Theoretical: 11 kDa. Actual: 50 kDa.
Purification:	Protein A purified

Applications

1. Tissue/cell: human colon carcinoma; 4% Paraformaldehyde-fixed and paraffin-embedded; Antigen retrieval: citrate buffer (0.01M, pH6.0), Boiling bathing for 15 min; Block endogenous peroxidase by 3% Hydrogen peroxide for 30 min; Blocking buffer (normal goat serum) at 37°C for 20 min;

Incubation: Anti-HPV16 E6+HPV18 E6 Polyclonal Antibody, Unconjugated (TMAB-00884) 1:200, overnight at 4°C, followed by conjugation to the secondary antibody and DAB staining.

2. Sample:

Lane 1: Recombinant HPV16 E6 protein, DsbC & His 0.1 µg

Lane 2: Recombinant HPV16 E6 protein, DsbC & His 0.05 µg

Primary: Anti-HPV16 E6 + HPV18 E6 (TMAB-00884) at 1/1000 dilution

Secondary: IRDye800CW Goat Anti-Rabbit IgG at 1/20000 dilution

Predicted band size: 11 kDa

Verified Activity: Observed band size: 50 kDa

3. Blank control (black line): Hela.

Primary Antibody (green line): Rabbit Anti-HPV16 E6 + HPV18 E6 antibody (TMAB-00884)

Dilution: 1 µg/Test;

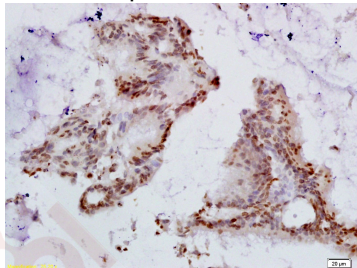
Secondary Antibody (white blue line): Goat anti-rabbit IgG-AF488

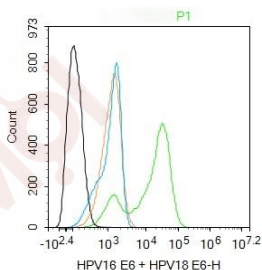
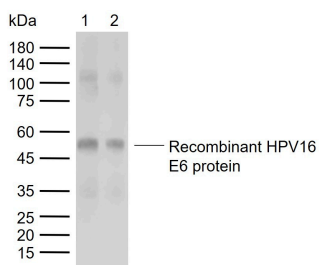
Dilution: 0.5 µg/Test.

Isotype control (orange line): Normal Rabbit IgG

Protocol

The cells were fixed with 4% PFA (10 min at room temperature) and then permeabilized with 90% ice-cold methanol for 20 min at -20°C, The cells were then incubated in 5% BSA to block non-specific protein-protein interactions for 30 min at room temperature. Cells stained with Primary Antibody for 30 min at room temperature. The secondary antibody used for 40 min at room temperature.





Application: FCM,IF,IHC-Fr,IHC-P,WB

Recommended WB: 1:500-2000; IHC-P: 1:100-500; IHC-Fr: 1:100-500; IF: 1:100-500; FCM: 1ug/Test

Properties

Stability & Storage: Store at -20°C or -80°C for 12 months. Avoid repeated freeze-thaw cycles.

Shipping: Shipping with blue ice.

Antigen Details

Immunogen: KLH conjugated synthetic peptide: HPV16 E6+ HPV18 E6

Antigen Species: HPV16/HPV18

Synonyms: Human papillomavirus type 18 E6;Protein E6;Human papillomavirus type 16 E6;HPV16/18 protein;Human Papilloma virus;HPV16+HPV18 E6;E6

Inhibitor · Natural Compounds · Compound Libraries · Recombinant Proteins

This product is for Research Use Only · Not for Human or Veterinary or Therapeutic Use

Tel:781-999-4286 E_mail:info@targetmol.com Address:34 Washington Street,Wellesley Hills,MA 02481