

Anti-HPV16 E6 Polyclonal Antibody 2

Product Details

Ig Type:	IgG
Reactivity:	HPV16
Molecular Weight:	Theoretical: 11 kDa. Actual: 50 kDa.
Purification:	Protein A purified

Applications

1. Blank control (black line): Hela.
 Primary Antibody (green line): Rabbit Anti-HPV16 E6 antibody (TMAB-00883)
 Dilution: 1 µg/Test;
 Secondary Antibody (white blue line): Goat anti-rabbit IgG-AF488
 Dilution: 0.5 µg/Test.
 Isotype control (orange line): Normal Rabbit IgG
 Protocol

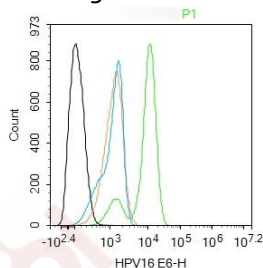
The cells were fixed with 4% PFA (10 min at room temperature) and then permeabilized with 90% ice-cold methanol for 20 min at -20°C, The cells were then incubated in 5% BSA to block non-specific protein-protein interactions for 30 min at room temperature. Cells stained with Primary Antibody for 30 min at room temperature. The secondary antibody used for 40 min at room temperature.

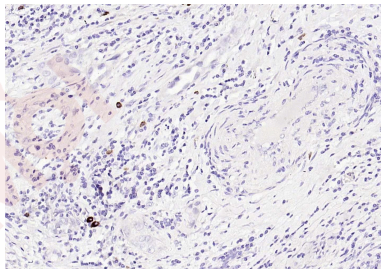
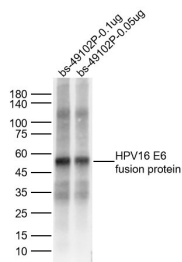
Verified Activity:

2. Sample:

Lane 1: HPV16 E6 fusion protein 0.1 µg Lysates
 Lane 2: HPV16 E6 fusion protein 0.05 µg Lysates
 Primary: Anti-HPV16 E6 (TMAB-00883) at 1/1000 dilution
 Secondary: IRDye800CW Goat Anti-Rabbit IgG at 1/20000 dilution
 Predicted band size: 11 kDa
 Observed band size: 50 kDa

3. Paraformaldehyde-fixed, paraffin embedded (human cervical carcinoma); Antigen retrieval by boiling in sodium citrate buffer (pH6.0) for 15 min; Block endogenous peroxidase by 3% hydrogen peroxide for 20 min; Blocking buffer (normal goat serum) at 37°C for 30 min; Incubation with (HPV16 E6) Polyclonal Antibody, Unconjugated (TMAB-00883) at 1:200 overnight at 4°C, followed by operating according to SP Kit (Rabbit) instructions and DAB staining.





Application: FCM,IF,IHC-Fr,IHC-P,WB

Recommended WB: 1:500-2000; IHC-P: 1:100-500; IHC-Fr: 1:400-800; IF: 1:100-500; FCM: 1ug/Test

Properties

Stability & Storage: Store at -20°C or -80°C for 12 months. Avoid repeated freeze-thaw cycles.

Shipping: Shipping with blue ice.

Antigen Details

Immunogen: Recombinant Protein: HPV16 E6

Synonyms: VE6_HP16;HPV16 E6;E6;E6 protein;Human Papilloma Virus;Protein E6;HPV16-E6;Human papillomavirus type 16;Human papillomavirus type 16 E6

Inhibitor · Natural Compounds · Compound Libraries · Recombinant Proteins

This product is for Research Use Only · Not for Human or Veterinary or Therapeutic Use

Tel:781-999-4286

E_mail:info@targetmol.com

Address:34 Washington Street,Wellesley Hills,MA 02481