

Anti-HPV16 E6 Polyclonal Antibody

Product Details

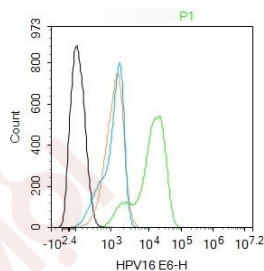
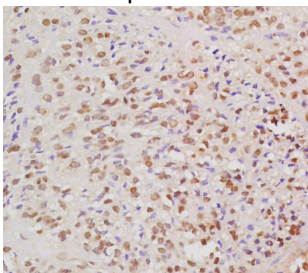
Ig Type: IgG
Reactivity: HPV16
Molecular Weight: Theoretical: 11 kDa.
Purification: Protein A purified

Applications

1. Tissue/cell: human cervical carcinoma; 4% Paraformaldehyde-fixed and paraffin-embedded;
Antigen retrieval: citrate buffer (0.01M, pH6.0), Boiling bathing for 15 min; Block endogenous peroxidase by 3% Hydrogen peroxide for 30 min; Blocking buffer (normal goat serum) at 37°C for 20 min;
Incubation: Anti-HPV16-E6 Polyclonal Antibody, Unconjugated (TMAB-00882) 1:200, overnight at 4°C, followed by conjugation to the secondary antibody and DAb staining.

2. Blank control (black line): Hela.
Primary Antibody (green line): Rabbit Anti-HPV16 E6 antibody (TMAB-00882)
Verified Activity: Dilution: 1 µg/Test;
Secondary Antibody (white blue line): Goat anti-rabbit IgG-AF488
 Dilution: 0.5 µg/Test.
Isotype control (orange line): Normal Rabbit IgG

Protocol
 The cells were fixed with 4% PFA (10 min at room temperature) and then permeabilized with 90% ice-cold methanol for 20 min at -20°C, The cells were then incubated in 5% BSA to block non-specific protein-protein interactions for 30 min at room temperature. Cells stained with Primary Antibody for 30 min at room temperature. The secondary antibody used for 40 min at room temperature.



Application: FCM,IF,IHC-Fr,IHC-P
Recommended: IHC-P: 1:100-500; IHC-Fr: 1:100-500; IF: 1:100-500; FCM: 1ug/Test

Properties

Stability & Storage: Store at -20°C or -80°C for 12 months. Avoid repeated freeze-thaw cycles.

Shipping: Shipping with blue ice.

Antigen Details

Immunogen: KLH conjugated synthetic peptide: HPV16 E6

Antigen Species: HPV16

Synonyms: E6 protein;HPV16-E6;Human papillomavirus type 16;Human Papilloma Virus;VE6_HP16;E6; Protein E6;HPV16 E6;Human papillomavirus type 16 E6

Inhibitor · Natural Compounds · Compound Libraries · Recombinant Proteins

This product is for Research Use Only · Not for Human or Veterinary or Therapeutic Use

Tel:781-999-4286 E_mail:info@targetmol.com Address:34 Washington Street,Wellesley Hills,MA 02481