

Anti-His Tag Antibody (8J279)

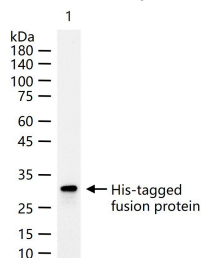
Product Details

Ig Type:	IgG
Reactivity:	Species independent
Molecular Weight:	Actual: 30 kDa.
Clone:	8J279
Purification:	Protein G purified

Applications

Verified Activity:

50 ng Recombinant GFP protein per Lane probed with His tag monoclonal antibody respectively, unconjugated (TMAB-00862) at 1:5000 dilution and 4°C overnight incubation. Followed by corresponding conjugated secondary antibody incubation at RT for 60 min.



Application:	ELISA,FCM,ICC/IF,IF,IHC-Fr,IHC-P,WB
Recommended	ELISA=1:1000-5000; FCM=1 µg/Test; ICC/IF=1:100-500; IF=1:200-1000; IHC-Fr=1:200-1000; IHC-P=1:200-1000; WB=1:5000-50000

Properties

Stability & Storage:	Store at -20°C or -80°C for 12 months. Avoid repeated freeze-thaw cycles.
Shipping:	Shipping with blue ice.

Antigen Details

Immunogen:	KLH conjugated HHHHHH peptide
Synonyms:	6 His epitope tag;His-Tag;HHHHHH tag;Hexa His tag;HisX6;Histidine;6His;HHHHHH epitope tag
Biology Area:	6x his tag®,His Tag

Research Background

The H-H-H-H-H-H motif is used as a tag on many recombinant proteins to facilitate purification. The antibody recognizes the His-tag fused to the amino- or carboxy- termini of targeted proteins in transfected or transformed cells.

Inhibitor · Natural Compounds · Compound Libraries · Recombinant Proteins

This product is for Research Use Only· Not for Human or Veterinary or Therapeutic Use

Tel:781-999-4286 E_mail:info@targetmol.com Address:34 Washington Street,Wellesley Hills,MA 02481