

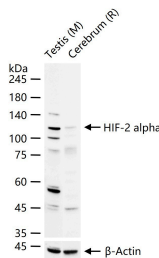
Anti-HIF-2 alpha Polyclonal Antibody

Product Details

Ig Type:	IgG
Reactivity:	Mouse,Rat (predicted:Human)
Molecular Weight:	Theoretical: 96 kDa. Actual: 110 kDa.
Purification:	Protein A purified

Applications

Verified Activity: 25 µg total protein per Lane of various lysates probed with HIF 2 alpha polyclonal antibody, unconjugated (TMAB-00859) at 1:1000 dilution and 4°C overnight incubation. Followed by conjugated secondary antibody incubation at RT for 60 min.



Application:	FCM,ICC/IF,WB
Recommended	FCM=1 µg/Test; ICC/IF=1:50-200; WB=1:500-2000

Properties

Stability & Storage:	Store at -20°C or -80°C for 12 months. Avoid repeated freeze-thaw cycles.
Shipping:	Shipping with blue ice.

Antigen Details

Immunogen:	KLH conjugated synthetic peptide: mouse HIF 2 Alpha
Antigen Species:	Mouse
Gene ID:	13819
Uniprot ID:	P97481
Synonyms:	bHLHe73;HIF2A;Endothelial PAS domain-containing protein 1;MOP 2;Class E basic helix-loop-helix protein 73;HIF-2-alpha;HIF-1-alpha-like factor;MOP2;PASD2;Member of PAS protein 2; Member of pas superfamily 2;PAS domain-containing protein 2;Hypoxia inducible factor 2 alpha subunit;ECYT4;EPAS1;Hypoxia inducible factor 2 alpha;HIF2-alpha;Endothelial PAS domain containing protein 1;EPAS 1;Basic helix loop helix PAS protein MOP2;HLF
Biology Area:	Response to hypoxia,HIF,HIF,HIF,HLH,Mitochondrial transcription,Hypoxia

Research Background

Transcription factor involved in the induction of oxygen regulated genes. Binds to core DNA sequence 5'-[AG]CGTG-3' within the hypoxia response element (HRE) of target gene promoters. Regulates the vascular endothelial growth factor (VEGF) expression and seems to be implicated in the development of blood vessels and the tubular system of

A DRUG SCREENING EXPERT

lung. May also play a role in the formation of the endothelium that gives rise to the blood brain barrier. Potent activator of the Tie-2 tyrosine kinase expression. Activation requires recruitment of transcriptional coactivators such as CREBPB and probably EP300. Interaction with redox regulatory protein APEX seems to activate CTAD.

Inhibitor · Natural Compounds · Compound Libraries · Recombinant Proteins

This product is for Research Use Only · Not for Human or Veterinary or Therapeutic Use

Tel:781-999-4286 E_mail:info@targetmol.com Address:34 Washington Street,Wellesley Hills,MA 02481