

Anti-HGFR/c-Met Polyclonal Antibody

Product Details

Ig Type:	IgG
Reactivity:	Human,Mouse,Rat
Molecular Weight:	Theoretical: 33/123/156 kDa. Actual: 145 kDa.
Purification:	Protein A purified

Applications

1. Sample:

- Lane 1: Mouse Kidney tissue lysates
- Lane 2: Mouse Stomach tissue lysates
- Lane 3: Mouse Lung tissue lysates
- Lane 4: Rat Kidney tissue lysates
- Lane 5: Rat Stomach tissue lysates
- Lane 6: Rat Lung tissue lysates

Primary: Anti-MET (TMAB-00853) at 1/1000 dilution

Secondary: IRDye800CW Goat Anti-Rabbit IgG at 1/20000 dilution

Predicted band size: 33/123/153 kDa

Observed band size: 145 kDa

2. Tissue/cell: human gastric carcinoma; 4% Paraformaldehyde-fixed and paraffin-embedded; Antigen retrieval: citrate buffer (0.01M, pH6.0), Boiling bathing for 15 min; Block endogenous peroxidase by 3% Hydrogen peroxide for 30 min; Blocking buffer (normal goat serum) at 37°C for 20 min;

Verified Activity:

Incubation: Anti-C-Met Polyclonal Antibody, Unconjugated (TMAB-00853) 1:100, overnight at 4° C, followed by conjugation to the secondary antibody and DAb staining.

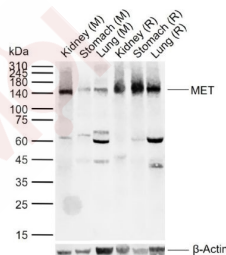
3. Tissue/cell: Human gastric cancer tissue; 4% Paraformaldehyde-fixed and paraffin-embedded;

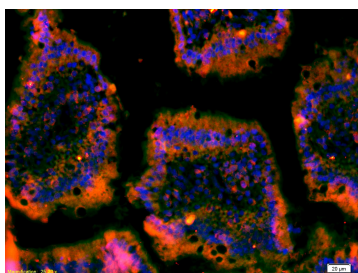
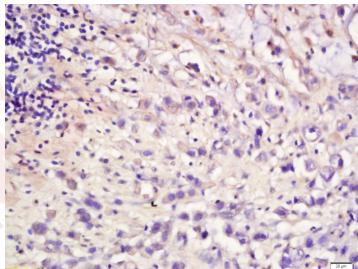
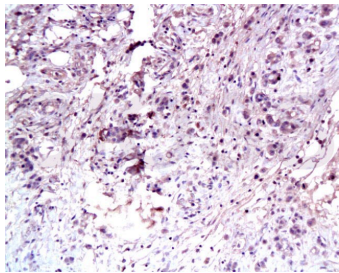
Antigen retrieval: citrate buffer (0.01M, pH6.0), Boiling bathing for 15 min; Block endogenous peroxidase by 3% Hydrogen peroxide for 30 min; Blocking buffer (normal goat serum) at 37°C for 20 min;

Incubation: Anti-Met (c Met) Polyclonal Antibody, Unconjugated (TMAB-00853) 1:200, overnight at 4°C, followed by conjugation to the secondary antibody and DAb staining.

4. Tissue/cell: mouse intestine tissue; 4% Paraformaldehyde-fixed and paraffin-embedded; Antigen retrieval: citrate buffer (0.01M, pH6.0), Boiling bathing for 15 min; Blocking buffer (normal goat serum) at 37°C for 20 min;

Incubation: Anti-C-Met Polyclonal Antibody, Unconjugated (TMAB-00853) 1:200, overnight at 4° C; The secondary antibody was Goat Anti-Rabbit IgG, Cy3 conjugated used at 1:200 dilution for 40 minutes at 37°C. DAPI (5 µg/ml,blue) was used to stain the cell nucleus.





Application: ELISA,IF,IHC-Fr,IHC-P,WB

Recommended WB: 1:500-2000; IHC-P: 1:100-500; IHC-Fr: 1:100-500; IF: 1:100-500; ELISA: 1:5000-10000

Properties

Stability & Storage: Store at -20°C or -80°C for 12 months. Avoid repeated freeze-thaw cycles.

Shipping: Shipping with blue ice.

Antigen Details

Immunogen: KLH conjugated synthetic peptide: mouse MET

Antigen Species: Mouse

Gene ID: 17295

Uniprot ID: P16056

Synonyms: AUTS9;MET proto-oncogene, receptor tyrosine kinase;HGFR;RCCP2;DFNB97;c-Met

Biology Area: Growth factor receptors,Proto-oncogenes,Receptor Tyrosine Kinases

Research Background

This gene encodes a member of the receptor tyrosine kinase family of proteins and the product of the proto-oncogene MET. The encoded preproprotein is proteolytically processed to generate alpha and beta subunits that are linked via disulfide bonds to form the mature receptor. Further processing of the beta subunit results in the formation of the M10 peptide, which has been shown to reduce lung fibrosis. Binding of its ligand, hepatocyte growth factor, induces dimerization and activation of the receptor, which plays a role in cellular survival, embryogenesis, and cellular migration and invasion. Mutations in this gene are associated with papillary renal cell carcinoma, hepatocellular carcinoma, and various head and neck cancers. Amplification and overexpression of this gene are also associated with multiple human cancers. [provided by RefSeq, May 2016]

Inhibitor · Natural Compounds · Compound Libraries · Recombinant Proteins

This product is for Research Use Only · Not for Human or Veterinary or Therapeutic Use

Tel:781-999-4286 E_mail:info@targetmol.com Address:34 Washington Street,Wellesley Hills,MA 02481