

Anti-HERC6 Polyclonal Antibody

Product Details

Ig Type: IgG
Reactivity: Mouse,Rat (predicted:Human,Pig,Rabbit)
Molecular Weight: Theoretical: 115 kDa. Actual: 135 kDa.
Purification: Protein A purified

Applications

1. Paraformaldehyde-fixed, paraffin embedded (Rat brain); Antigen retrieval by boiling in sodium citrate buffer (pH6.0) for 15 min; Block endogenous peroxidase by 3% hydrogen peroxide for 20 min; Blocking buffer (normal goat serum) at 37°C for 30 min; Antibody incubation with (HERC6) Polyclonal Antibody, Unconjugated (TMAB-00848) at 1:400 overnight at 4°C, followed by operating according to SP Kit (Rabbit) instructions and DAB staining.

2. Sample:

Lane 1: Mouse Placenta tissue lysates

Lane 2: Mouse Testis tissue lysates

Verified Activity: Lane 3: Rat Placenta tissue lysates

Lane 4: Rat Testis tissue lysates

Lane 5: Human HL-60 cell lysates

Lane 6: Human A431 cell lysates

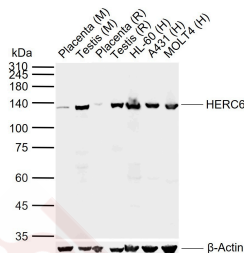
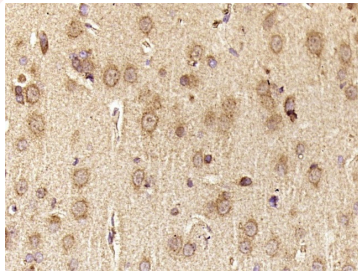
Lane 7: Human MOLT4 cell lysates

Primary: Anti-HERC6 (TMAB-00848) at 1/1000 dilution

Secondary: IRDye800CW Goat Anti-Rabbit IgG at 1/20000 dilution

Predicted band size: 115 kDa

Observed band size: 135 kDa



Application: IF,IHC-Fr,IHC-P,WB

Recommended WB: 1:500-2000; IHC-P: 1:100-500; IHC-Fr: 1:100-500; IF: 1:100-500

Properties

Stability & Storage: Store at -20°C or -80°C for 12 months. Avoid repeated freeze-thaw cycles.

Shipping: Shipping with blue ice.

Antigen Details

Immunogen: KLH conjugated synthetic peptide: human HERC6

Antigen Species: Human

Gene ID: 55008

Uniprot ID: Q8IVU3

Synonyms: Hect domain and RLD 6; Probable E3 ubiquitin protein ligase HERC6; FLJ20637; HERC6; HERC 6; HECT domain and RCC1 like domain containing protein 6; Potential ubiquitin ligase; HECT domain and RCC1-like domain-containing protein 6

Biology Area: Hect E3 Ligase

Inhibitor · Natural Compounds · Compound Libraries · Recombinant Proteins

This product is for Research Use Only · Not for Human or Veterinary or Therapeutic Use

Tel: 781-999-4286 E_mail: info@targetmol.com Address: 34 Washington Street, Wellesley Hills, MA 02481