

Anti-HEG1 Polyclonal Antibody

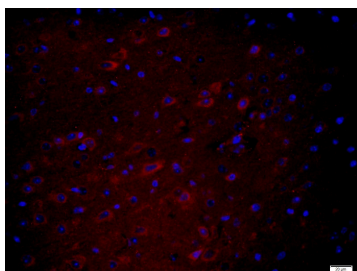
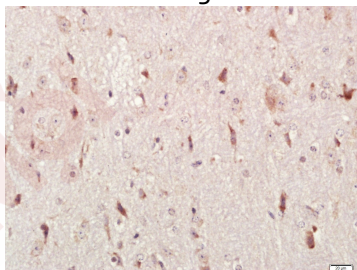
Product Details

Ig Type:	IgG
Reactivity:	Human,Mouse (predicted:Rat,Dog,Cow,Horse,Rabbit,Sheep)
Molecular Weight:	Theoretical: 144 kDa.
Purification:	Protein A purified

Applications

1. Paraformaldehyde-fixed, paraffin embedded (Mouse brain); Antigen retrieval by boiling in sodium citrate buffer (pH6.0) for 15 min; Block endogenous peroxidase by 3% hydrogen peroxide for 20 min; Blocking buffer (normal goat serum) at 37°C for 30 min; Antibody incubation with (HEG homolog 1) Polyclonal Antibody, Unconjugated (TMAB-00843) at 1:400 overnight at 4°C, followed by a conjugated secondary antibody for 20 min and DAB staining.
2. Paraformaldehyde-fixed, paraffin embedded (Mouse brain); Antigen retrieval by boiling in sodium citrate buffer (pH6.0) for 15 min; Block endogenous peroxidase by 3% hydrogen peroxide for 20 min; Blocking buffer (normal goat serum) at 37°C for 30 min; Antibody incubation with (HEG homolog 1) Polyclonal Antibody, Unconjugated (TMAB-00843) at 1:400 overnight at 4°C, followed by a conjugated secondary antibody for 90 minutes, and DAPI for nucleus staining.

Verified Activity:



Application:	IF,IHC-Fr,IHC-P
Recommended	IHC-P: 1:100-500; IHC-Fr: 1:100-500; IF: 1:100-500

A DRUG SCREENING EXPERT

Properties

Stability & Storage: Store at -20°C or -80°C for 12 months. Avoid repeated freeze-thaw cycles.

Shipping: Shipping with blue ice.

Antigen Details

Immunogen: KLH conjugated synthetic peptide: human HEG1

Antigen Species: Human

Gene ID: 57493

Uniprot ID: Q9ULI3

Synonyms: HEG1;HEG homolog 1;HEG;KIAA1237;MSTP112;MST112

Biology Area: Growth Factors,Transcription factors/regulators,Angiogenesis and vasculogenesis,Tight Junctions,Calcium Binding Proteins

Research Background

HEG1 (HEG homolog 1) is also known as HEG and is a 1,381 amino acid protein that exists as two alternatively spliced isoforms, one of which is a single-pass membrane protein and the other of which is secreted. HEG1, which is expressed in endothelial cells and smooth muscle cells of heart tissue, contains two EGF-like domains that play a role in calcium-binding events which may regulate concentric heart growth. The gene encoding HEG1 maps to human chromosome 3, which houses over 1,100 genes, including a chemokine receptor (CKR) gene cluster and a variety of human cancer-related gene loci. Key tumor suppressing genes on chromosome 3 include those that encode the apoptosis mediator RASSF1, the cell migration regulator HYAL1 and the angiogenesis suppressor SEMA3B. Marfan Syndrome, porphyria, von Hippel-Lindau syndrome, osteogenesis imperfecta and Charcot-Marie-Tooth Disease are a few of the numerous genetic diseases associated with chromosome 3.

Inhibitor · Natural Compounds · Compound Libraries · Recombinant Proteins

This product is for Research Use Only · Not for Human or Veterinary or Therapeutic Use

Tel:781-999-4286 E_mail:info@targetmol.com Address:34 Washington Street,Wellesley Hills,MA 02481