

## Anti-HA Tag Antibody (7E473)

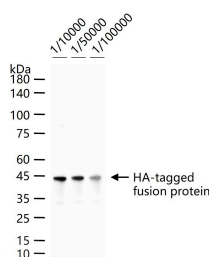
## Product Details

Ig Type:	IgG1
Reactivity:	Species independent
Molecular Weight:	Actual: 41 kDa.
Clone:	7E473
Purification:	Protein G purified

## Applications

## Verified Activity:

500 ng Tags Positive Control Whole Cell Lysate, Hisper Lane probed with HA Tag monoclonal antibody respectively, unconjugated (TMAB-00827) at 1:10000-1:100000 dilution and 4°C overnight incubation. Followed by corresponding conjugated secondary antibody incubation at RT for 60 min.



Application: ELISA,FCM,ICC/IF,IF,IHC-Fr,IHC-P,WB

Recommended ELISA=1:1000-5000; FCM=1 µg/Test; ICC/IF=1:100-500; IF=1:200-1000; IHC-Fr=1:200-1000; IHC-P=1:200-1000; WB=1:10000-100000

## Properties

Stability & Storage: Store at -20°C or -80°C for 12 months. Avoid repeated freeze-thaw cycles.

Shipping: Shipping with blue ice.

## Antigen Details

Immunogen: KLH conjugated HA Tag

Synonyms: Hemagglutinin HA2;HA-tag;HA epitope tag;hemagglutinin;Hemagglutinin HA1 chain;HA2;HA1

Biology Area: ha tag,HA Tag

## Research Background

Human influenza hemagglutinin (HA) is a surface glycoprotein required for the infectivity of the human virus. The HA tag is derived from the HA molecule corresponding to amino acids 98-106 has been extensively used as a general epitope tag in expression vectors. Many recombinant proteins have been engineered to express the HA tag, which does not appear to interfere with the bioactivity or the biodistribution of the recombinant protein. This tag facilitates the detection, isolation, and purification of the proteins.

**Inhibitor · Natural Compounds · Compound Libraries · Recombinant Proteins**

This product is for Research Use Only · Not for Human or Veterinary or Therapeutic Use

Tel:781-999-4286 E\_mail:info@targetmol.com Address:34 Washington Street,Wellesley Hills,MA 02481