

## Anti-GSK3B Polyclonal Antibody 3

## Product Details

Ig Type:	IgG
Reactivity:	Human,Mouse,Rat
Molecular Weight:	Theoretical: 47 kDa.
Purification:	Protein A purified

## Applications

1. Blank control (blue line): MCF 7 (blue).  
Primary Antibody (green line): Rabbit Anti-GSK-3 Beta (CT) antibody (TMAB-00820)  
Dilution: 1 µg/10<sup>5</sup> cells;  
Isotype Control Antibody (orange line): Rabbit IgG.  
Secondary Antibody (white blue line): Goat anti-rabbit IgG-FITC  
Dilution: 1 µg/test.

## Protocol

The cells were fixed with 70% methanol (Overnight at 4°C) and then permeabilized with 90% ice-cold methanol for 30 min on ice. Cells stained with Primary Antibody for 30 min at room temperature. The cells were then incubated in 1 X PBS/2% BSA/10% goat serum to block non-specific protein-protein interactions followed by the antibody for 15 min at room temperature. The secondary antibody used for 40 min at room temperature.

2. Paraformaldehyde-fixed, paraffin embedded (Rat brain); Antigen retrieval by boiling in sodium citrate buffer (pH6.0) for 15 min; Block endogenous peroxidase by 3% hydrogen peroxide for 20 min; Blocking buffer (normal goat serum) at 37°C for 30 min; Antibody incubation with (GSK-3 Beta) Polyclonal Antibody, Unconjugated (TMAB-00820) at 1:400 overnight at 4°C, followed by operating according to SP Kit (Rabbit) instructions and DAB staining.

## Verified Activity:

3. Blank control: A431. Primary Antibody (green line): Rabbit Anti-GSK-3 Beta antibody (TMAB-00820)  
Dilution: 1 µg/10<sup>6</sup> cells;  
Isotype Control Antibody (orange line): Rabbit IgG.  
Secondary Antibody: Goat anti-rabbit IgG-AF488  
Dilution: 1 µg/test.

## Protocol

The cells were fixed with 4% PFA (10 min at room temperature) and then permeabilized with 90% ice-cold methanol for 20 min at -20°C. The cells were then incubated in 5% BSA to block non-specific protein-protein interactions for 30 min at room temperature. Cells stained with Primary Antibody for 30 min at room temperature. The secondary antibody used for 40 min at room temperature.

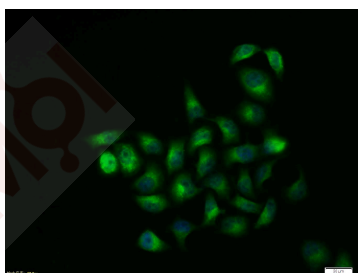
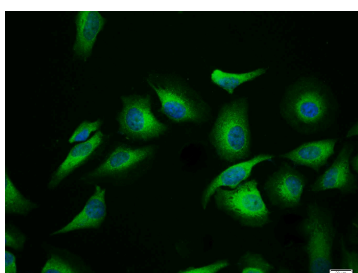
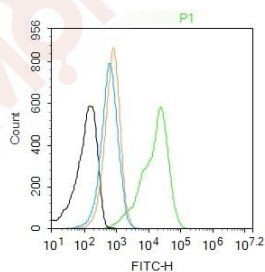
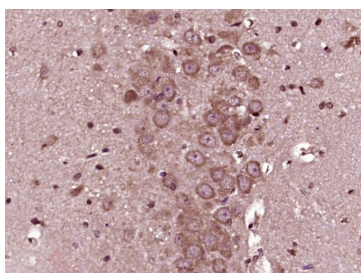
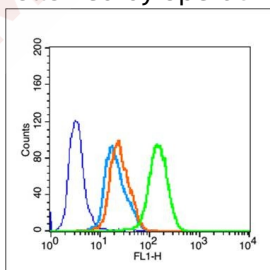
4. Tissue/cell: Hela cell; 4% Paraformaldehyde-fixed; Triton X-100 at room temperature for 20 min; Blocking buffer (normal goat serum) at 37°C for 20 min; Antibody incubation with (GSK-3 Beta) polyclonal Antibody, Unconjugated (TMAB-00820) 1:100, 90 minutes at 37°C; followed by a FITC conjugated Goat Anti-Rabbit IgG antibody at 37°C for 90 minutes, DAPI (blue) was used to stain the cell nucleus.

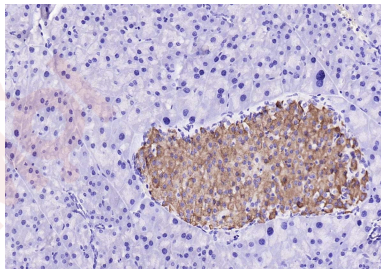
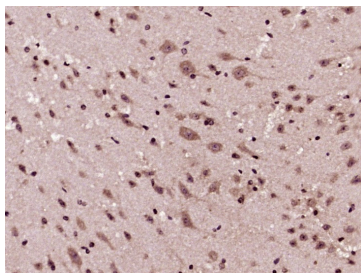
5. Tissue/cell: Hela cell; 4% Paraformaldehyde-fixed; Triton X-100 at room temperature for 20 min; Blocking buffer (normal goat serum) at 37°C for 20 min; Antibody incubation with (GSK-3 Beta) polyclonal Antibody, Unconjugated (TMAB-00820) 1:100, 90 minutes at 37°C; followed by

a FITC conjugated Goat Anti-Rabbit IgG antibody at 37°C for 90 minutes, DAPI (blue) was used to stain the cell nucleus.

6. Paraformaldehyde-fixed, paraffin embedded (Mouse brain); Antigen retrieval by boiling in sodium citrate buffer (pH6.0) for 15 min; Block endogenous peroxidase by 3% hydrogen peroxide for 20 min; Blocking buffer (normal goat serum) at 37°C for 30 min; Antibody incubation with (GSK-3 Beta) Polyclonal Antibody, Unconjugated (TMAB-00820) at 1:400 overnight at 4°C, followed by operating according to SP Kit (Rabbit) instructions and DAB staining.

7. Paraformaldehyde-fixed, paraffin embedded (rat pancreas); Antigen retrieval by boiling in sodium citrate buffer (pH6.0) for 15 min; Block endogenous peroxidase by 3% hydrogen peroxide for 20 min; Blocking buffer (normal goat serum) at 37°C for 30 min; Incubation with (GSK-3 Beta) Polyclonal Antibody, Unconjugated (TMAB-00820) at 1:200 overnight at 4°C, followed by operating according to SP Kit (Rabbit) instructions and DAB staining.





Application: FCM,ICC/IF,IF,IHC-Fr,IHC-P

Recommended FCM=1 µg/Test; ICC/IF=1:100-500; IF=1:100-500; IHC-Fr=1:100-500; IHC-P=1:100-500

### Properties

Stability & Storage: Store at -20°C or -80°C for 12 months. Avoid repeated freeze-thaw cycles.

Shipping: Shipping with blue ice.

### Antigen Details

Immunogen: KLH conjugated synthetic peptide: human GSK-3 Beta

Antigen Species: Human

Gene ID: 2932

Uniprot ID: P49841

Synonyms: glycogen synthase kinase 3 β;GSK3β;glycogen synthase kinase 3 beta;GSK-3β

Biology Area: Integration of energy metabolism, Metabolism of carbohydrates, Diabetes associated, Hypertrophy, Carbohydrate metabolism, Integration of energy, Cancer, Diabetes, Heart disease, Notch Pathway, Other Kinases, Cytoplasmic, Cytoplasmic

### Research Background

The protein encoded by this gene is a serine-threonine kinase, belonging to the glycogen synthase kinase subfamily. It is involved in energy metabolism, neuronal cell development, and body pattern formation. Polymorphisms in this gene have been implicated in modifying risk of Parkinson disease, and studies in mice show that overexpression of this gene may be relevant to the pathogenesis of Alzheimer disease. Alternatively spliced transcript variants encoding different isoforms have been found for this gene.[provided by RefSeq, Sep 2009]

**Inhibitor · Natural Compounds · Compound Libraries · Recombinant Proteins**

This product is for Research Use Only · Not for Human or Veterinary or Therapeutic Use

Tel:781-999-4286 E\_mail:info@targetmol.com Address:34 Washington Street,Wellesley Hills,MA 02481