

Anti-GSK3B Polyclonal Antibody 2

Product Details

Ig Type: IgG
Reactivity: Human, Mouse, Rat (predicted: Chicken, Dog, Pig, Cow, Horse, Sheep)
Molecular Weight: Theoretical: 47 kDa. Actual: 47 kDa.
Purification: Protein A purified

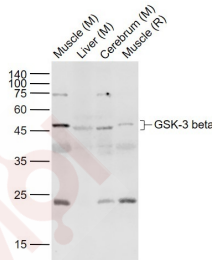
Applications

Sample:

Lane 1: Muscle (Mouse) Lysate at 40 μ g
 Lane 2: Liver (Mouse) Lysate at 40 μ g
 Lane 3: Cerebrum (Mouse) Lysate at 40 μ g

Verified Activity:

Lane 4: Muscle (Rat) Lysate at 40 μ g
 Primary: Anti-GSK-3 beta (TMAB-00819) at 1/1000 dilution
 Secondary: IRDye800CW Goat Anti-Rabbit IgG at 1/20000 dilution
 Predicted band size: 47 kDa
 Observed band size: 47 kDa



Application: WB
Recommended WB: 1:500-2000

Properties

Stability & Storage: Store at -20°C or -80°C for 12 months. Avoid repeated freeze-thaw cycles.
Shipping: Shipping with blue ice.

Antigen Details

Immunogen: KLH conjugated synthetic peptide: human GSK-3 Beta
Antigen Species: Human
Gene ID: 2932
Uniprot ID: P49841
Synonyms: GSK3 β ; glycogen synthase kinase 3 β ; GSK-3 β ; glycogen synthase kinase 3 beta
Biology Area: Integration of energy metabolism, Metabolism of carbohydrates, Diabetes associated, Hypertrophy, Carbohydrate metabolism, Integration of energy, Cancer, Diabetes, Heart disease, Notch Pathway, Other Kinases, Cytoplasmic, Cytoplasmic

Research Background

The protein encoded by this gene is a serine-threonine kinase, belonging to the glycogen synthase kinase subfamily. It is involved in energy metabolism, neuronal cell development, and body pattern formation. Polymorphisms in this gene have been implicated in modifying risk of Parkinson disease, and studies in mice show that overexpression of this gene may be relevant to the pathogenesis of Alzheimer disease. Alternatively spliced transcript variants encoding different isoforms have been found for this gene.[provided by RefSeq, Sep 2009]

Inhibitor · Natural Compounds · Compound Libraries · Recombinant Proteins

This product is for Research Use Only · Not for Human or Veterinary or Therapeutic Use

Tel:781-999-4286 E_mail:info@targetmol.com Address:34 Washington Street,Wellesley Hills,MA 02481