

## Anti-GSK3B Polyclonal Antibody

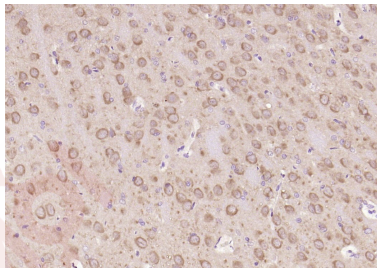
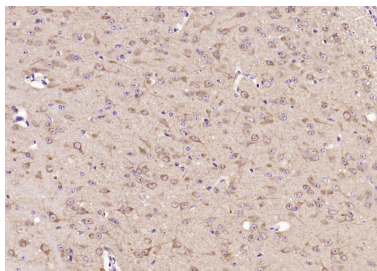
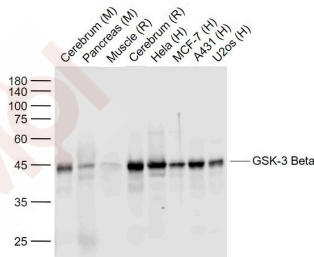
### Product Details

Ig Type:	IgG
Reactivity:	Human,Mouse,Rat
Molecular Weight:	Theoretical: 47 kDa. Actual: 45 kDa.
Purification:	Protein A purified

### Applications

1. 25 µg total protein per Lane of various lysates probed with GSK-3 Beta polyclonal antibody, unconjugated (TMAB-00818) at 1:1000 dilution and 4°C overnight incubation. Followed by conjugated secondary antibody incubation at RT for 60 min.
2. Paraformaldehyde-fixed, paraffin embedded Mouse Cerebrum; Antigen retrieval by boiling in sodium citrate buffer (pH6.0) for 15 min; Antibody incubation with GSK-3 beta Monoclonal Antibody, Unconjugated (TMAB-00818) at 1:200 overnight at 4°C, followed by conjugation to the secondary antibody and DAB staining.
3. Paraformaldehyde-fixed, paraffin embedded Rat Cerebrum; Antigen retrieval by boiling in sodium citrate buffer (pH6.0) for 15 min; Antibody incubation with GSK-3 beta Monoclonal Antibody, Unconjugated (TMAB-00818) at 1:200 overnight at 4°C, followed by conjugation to the secondary antibody and DAB staining.

Verified Activity:



Application:	IF,IHC-Fr,IHC-P,WB
Recommended	WB: 1:500-1000; IHC-P: 1:100-500; IHC-Fr: 1:100-500; IF: 1:100-500

### Properties

Stability & Storage: Store at -20°C or -80°C for 12 months. Avoid repeated freeze-thaw cycles.

Shipping: Shipping with blue ice.

---

### Antigen Details

Immunogen: KLH conjugated synthetic peptide: human GSK-3 Beta

Antigen Species: Human

Gene ID: 2932

Uniprot ID: P49841

Synonyms: glycogen synthase kinase 3  $\beta$ ; GSK-3 $\beta$ ; glycogen synthase kinase 3 beta; GSK3 $\beta$

Biology Area: Integration of energy metabolism, Metabolism of carbohydrates, Diabetes associated, Hypertrophy, Carbohydrate metabolism, Integration of energy, Cancer, Diabetes, Heart disease, Notch Pathway, Other Kinases, Cytoplasmic, Cytoplasmic

---

### Research Background

The protein encoded by this gene is a serine-threonine kinase, belonging to the glycogen synthase kinase subfamily. It is involved in energy metabolism, neuronal cell development, and body pattern formation. Polymorphisms in this gene have been implicated in modifying risk of Parkinson disease, and studies in mice show that overexpression of this gene may be relevant to the pathogenesis of Alzheimer disease. Alternatively spliced transcript variants encoding different isoforms have been found for this gene. [provided by RefSeq, Sep 2009]

**Inhibitor · Natural Compounds · Compound Libraries · Recombinant Proteins**

This product is for Research Use Only · Not for Human or Veterinary or Therapeutic Use

Tel: 781-999-4286 E\_mail: info@targetmol.com Address: 34 Washington Street, Wellesley Hills, MA 02481