

## Anti-GSK3B Antibody (5W152)

### Product Details

Ig Type:	IgG
Reactivity:	Human,Mouse,Rat
Molecular Weight:	Theoretical: 47 kDa. Actual: 47 kDa.
Clone:	5W152
Purification:	Protein G purified

### Applications

#### 1. Sample:

Hela (Human) Cell Lysate at 30 µg

Hela ko GSK-3 Beta (Human) Cell Lysate at 30 µg

Primary: Anti-GSK-3 Beta (TMAB-00817) at 1/1000 dilution

Secondary: IRDye800CW Goat Anti-Mouse IgG at 1/20000 dilution

Predicted band size: 47 kDa

Observed band size: 47 kDa

#### 2. Sample:

Lane 1: Cerebrum (Mouse) Lysate at 40 µg

Lane 2: Pancreas (Mouse) Lysate at 40 µg

Lane 3: Muscle (Rat) Lysate at 40 µg

Lane 4: Cerebrum (Rat) Lysate at 40 µg

Lane 5: Hela (Human) Cell Lysate at 30 µg

Lane 6: MCF-7 (Human) Cell Lysate at 30 µg

Lane 7: A431 (Human) Cell Lysate at 30 µg

Lane 8: U2os (Human) Cell Lysate at 30 µg

#### Verified Activity:

Primary: Anti-GSK-3 Beta (TMAB-00817) at 1/1000 dilution

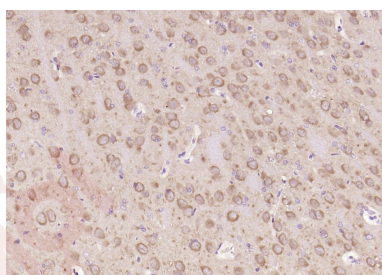
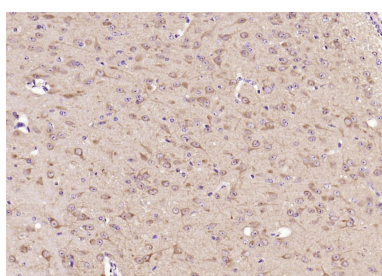
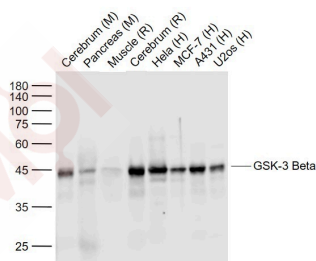
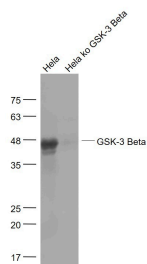
Secondary: IRDye800CW Goat Anti-Mouse IgG at 1/20000 dilution

Predicted band size: 47 kDa

Observed band size: 45 kDa

3. Paraformaldehyde-fixed, paraffin embedded (mouse brain); Antigen retrieval by boiling in sodium citrate buffer (pH6.0) for 15 min; Block endogenous peroxidase by 3% hydrogen peroxide for 20 min; Blocking buffer (normal goat serum) at 37°C for 30 min; Antibody incubation with (GSK-3 Beta) Monoclonal Antibody, Unconjugated (TMAB-00817) at 1:200 overnight at 4°C, followed by operating according to SP Kit (Mouse) instructions and DAB staining.

4. Paraformaldehyde-fixed, paraffin embedded (rat brain); Antigen retrieval by boiling in sodium citrate buffer (pH6.0) for 15 min; Block endogenous peroxidase by 3% hydrogen peroxide for 20 min; Blocking buffer (normal goat serum) at 37°C for 30 min; Antibody incubation with (GSK-3 Beta) Monoclonal Antibody, Unconjugated (TMAB-00817) at 1:200 overnight at 4°C, followed by operating according to SP Kit (Mouse) instructions and DAB staining.



Application: IF,IHC-Fr,IHC-P,WB

Recommended WB: 1:500-1000; IHC-P: 1:100-500; IHC-Fr: 1:100-500; IF: 1:200-500

### Properties

Stability & Storage: Store at -20°C or -80°C for 12 months. Avoid repeated freeze-thaw cycles.

Shipping: Shipping with blue ice.

### Antigen Details

Immunogen: KLH conjugated synthetic peptide: human GSK-3 Beta

Antigen Species: Human

Gene ID: 2932

Uniprot ID: P49841

Synonyms: glycogen synthase kinase 3 beta;GSK-3β;GSK3β;glycogen synthase kinase 3 β

Biology Area: Integration of energy metabolism, Metabolism of carbohydrates, Diabetes associated, Hypertrophy, Carbohydrate metabolism, Integration of energy, Cancer, Diabetes, Heart disease, Notch Pathway, Other Kinases, Cytoplasmic, Cytoplasmic

Research Background

The protein encoded by this gene is a serine-threonine kinase, belonging to the glycogen synthase kinase subfamily. It is involved in energy metabolism, neuronal cell development, and body pattern formation. Polymorphisms in this gene have been implicated in modifying risk of Parkinson disease, and studies in mice show that overexpression of this gene may be relevant to the pathogenesis of Alzheimer disease. Alternatively spliced transcript variants encoding different isoforms have been found for this gene.[provided by RefSeq, Sep 2009]

**Inhibitor · Natural Compounds · Compound Libraries · Recombinant Proteins**

This product is for Research Use Only · Not for Human or Veterinary or Therapeutic Use

Tel:781-999-4286 E\_mail:info@targetmol.com Address:34 Washington Street,Wellesley Hills,MA 02481