

Anti-GRO beta/CXCL2 Polyclonal Antibody

Product Details

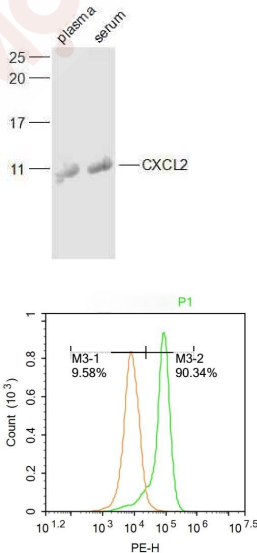
Ig Type: IgG
Reactivity: Human, Mouse, Rat (predicted: Pig, Cow, Horse, Rabbit, Sheep)
Molecular Weight: Theoretical: 12 kDa. Actual: 12 kDa.
Purification: Protein A purified

Applications

1. Sample:
Plasma (Rat) at 40 µg
Serum (Rat) at 40 µg
Primary: Anti-CXCL2 (TMAB-00814) at 1/1000 dilution
Secondary: IRDye800CW Goat Anti-Rabbit IgG at 1/20000 dilution
Predicted band size: 12 kDa
Observed band size: 12 kDa

Verified Activity:

2. U-937 cells were fixed with 4% PFA for 10 min at room temperature, permeabilized with 20% PBST for 20 min at room temperature, and incubated in 5% BSA blocking buffer for 30 min at room temperature. Cells were then stained with TMAB-00814 Antibody at 1:500 dilution in blocking buffer and incubated for 30 min at room temperature, washed twice with 2% BSA in PBS, followed by secondary antibody incubation for 40 min at room temperature. Acquisitions of 20,000 events were performed. Cells stained with primary antibody (green), and isotype control (orange).



Application: FCM, IF, IHC-Fr, WB

Recommended WB: 1:500-2000; IHC-Fr: 1:100-500; IF: 1:100-500; FCM: 0.2 µg/test

Properties

Stability & Storage: Store at -20°C or -80°C for 12 months. Avoid repeated freeze-thaw cycles.

Shipping: Shipping with blue ice.

Antigen Details

Immunogen: KLH conjugated synthetic peptide: human MIP2

Antigen Species: Human

Gene ID: 2920

Uniprot ID: P19875

Synonyms: MGSA-b;CINC-2a;MIP2;GRO2;GRO β /CXCL2;chemokine (C-X-C motif) ligand 2;SCYB2;GROb;MIP2A;MIP-2a

Biology Area: Alpha Chemokines (CXC)

Research Background

GRO beta is a member of the CXC, or chemokine class. It contains the ELR domain immediately preceding the first cysteine residue near the amino terminus. Other chemokines in this group include IL8, GRO alpha/beta/gamma, mouse KC, ENA78, GCP2, PBP/CTAPIII/beta TG/NAP2. These chemokines act primarily on neutrophils as chemoattractants and activators, including neutrophil degradation with release of myeloperoxidase and other enzymes. GRO beta was originally identified as a heparin-binding protein secreted from a murine macrophage cell line in response to endotoxin stimulation. GRO beta is an approximately 8 kDa polypeptide of 73 amino acids. The precursor form of GRO beta consists of 100 amino acids. To generate the mature GRO beta, the precursor cleaves its amino terminal 27 amino acids. GRO beta shows 60% amino acid homology to human GRO alpha and GRO gamma.

Inhibitor · Natural Compounds · Compound Libraries · Recombinant Proteins

This product is for Research Use Only · Not for Human or Veterinary or Therapeutic Use

Tel:781-999-4286 E_mail:info@targetmol.com Address:34 Washington Street,Wellesley Hills,MA 02481