

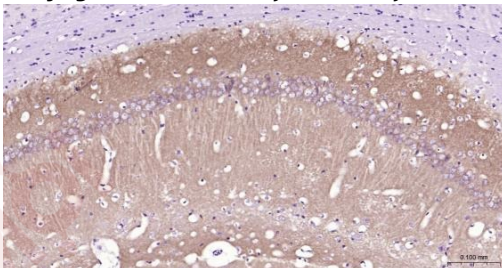
Anti-GRIA1 Polyclonal Antibody

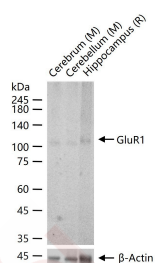
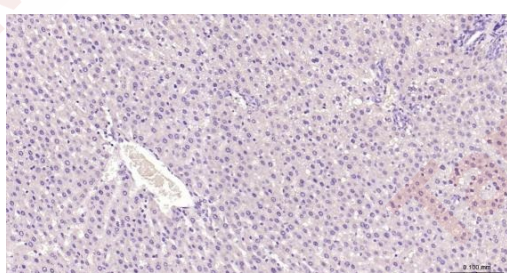
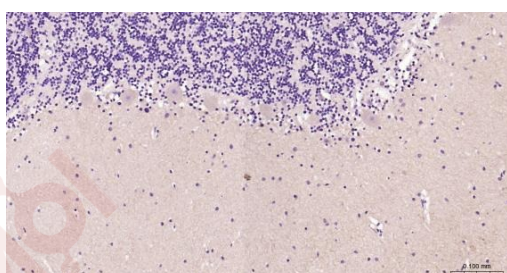
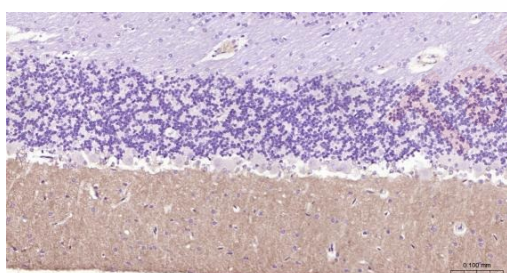
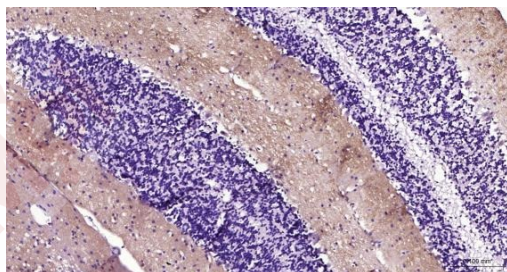
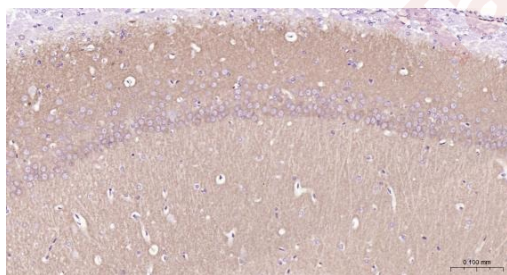
Product Details

| | |
|-------------------|---------------------------------------|
| Ig Type: | IgG |
| Reactivity: | Human,Mouse,Rat |
| Molecular Weight: | Theoretical: 98 kDa. Actual: 105 kDa. |
| Purification: | Protein A purified |

Applications

1. Paraformaldehyde-fixed, paraffin embedded Mouse hippocampal; Antigen retrieval by boiling in sodium citrate buffer (pH6.0) for 15 min; Antibody incubation with GluR1 Polyclonal Antibody, Unconjugated (TMAB-00810) at 1:200 overnight at 4°C, followed by conjugation to the secondary antibody and DAB staining.
2. Paraformaldehyde-fixed, paraffin embedded Rat hippocampal; Antigen retrieval by boiling in sodium citrate buffer (pH6.0) for 15 min; Antibody incubation with GluR1 Polyclonal Antibody, Unconjugated (TMAB-00810) at 1:200 overnight at 4°C, followed by conjugation to the secondary antibody and DAB staining.
3. Paraformaldehyde-fixed, paraffin embedded Mouse Cerebellum; Antigen retrieval by boiling in sodium citrate buffer (pH6.0) for 15 min; Antibody incubation with GluR1 Polyclonal Antibody, Unconjugated (TMAB-00810) at 1:200 overnight at 4°C, followed by conjugation to the secondary antibody and DAB staining.
4. Paraformaldehyde-fixed, paraffin embedded Rat Cerebellum; Antigen retrieval by boiling in sodium citrate buffer (pH6.0) for 15 min; Antibody incubation with GluR1 Polyclonal Antibody, Unconjugated (TMAB-00810) at 1:200 overnight at 4°C, followed by conjugation to the secondary antibody and DAB staining.
5. Paraformaldehyde-fixed, paraffin embedded Human Cerebellum; Antigen retrieval by boiling in sodium citrate buffer (pH6.0) for 15 min; Antibody incubation with GluR1 Polyclonal Antibody, Unconjugated (TMAB-00810) at 1:200 overnight at 4°C, followed by conjugation to the secondary antibody and DAB staining.
6. (Negative control) paraformaldehyde-fixed, paraffin embedded Rat Liver; Antigen retrieval by boiling in sodium citrate buffer (pH6.0) for 15 min; Antibody incubation with GluR1 Polyclonal Antibody, Unconjugated (TMAB-00810) at 1:200 overnight at 4°C, followed by conjugation to the secondary antibody and DAB staining.
7. 25 µg total protein per Lane of various lysates probed with GluR1 polyclonal antibody, unconjugated (TMAB-00810) at 1:2000 dilution and 4°C overnight incubation. Followed by conjugated secondary antibody incubation at RT for 60 min.





Application: IF,IHC-Fr,IHC-P,IP,WB

Recommended IF=1:100-200; IHC-Fr=1:100-200; IHC-P=1:100-200; IP=1:20-50; WB=1:500-2000

Properties

Stability & Storage: Store at -20°C or -80°C for 12 months. Avoid repeated freeze-thaw cycles.

Shipping: Shipping with blue ice.

Antigen Details

Immunogen: KLH conjugated synthetic peptide: human GluR1

Antigen Species: Human

Gene ID: 2890

Uniprot ID: P42261

Synonyms: GLURA;GLUR A;Glutamate receptor ionotropic AMPA 1;OTTHUMP00000224243;GRIA1; OTTHUMP00000224242;Glutamate receptor ionotropic;GluR-K1;OTTHUMP00000224241;GLUR 1; AMPA 1;GluR K1;OTTHUMP00000165781;GluRK1;HBGR1;Gria 1;GluR-A;OTTHUMP00000160643; GLUH1;AMPA selective glutamate receptor 1;GLUH 1;GLUR1;MGC133252;Glutamate receptor 1; Glutamate receptor, ionotropic, AMPA 1

Biology Area: Glutamate Receptors,AMPA / Kainate

Research Background

Glutamate receptors are the predominant excitatory neurotransmitter receptors in the mammalian brain and are activated in a variety of normal neurophysiologic processes. These receptors are heteromeric protein complexes with multiple subunits, each possessing transmembrane regions, and all arranged to form a ligand-gated ion channel. The classification of glutamate receptors is based on their activation by different pharmacologic agonists. This gene belongs to a family of alpha-amino-3-hydroxy-5-methyl-4-isoxazole propionate (AMPA) receptors. Alternatively spliced transcript variants encoding different isoforms have been found for this gene. [provided by RefSeq, Jul 2008].

Inhibitor · Natural Compounds · Compound Libraries · Recombinant Proteins

This product is for Research Use Only · Not for Human or Veterinary or Therapeutic Use

Tel:781-999-4286 E_mail:info@targetmol.com Address:34 Washington Street,Wellesley Hills,MA 02481
