

## Anti-GPVI Polyclonal Antibody

### Product Details

Ig Type: IgG  
Reactivity: Human, Mouse, Rat (predicted: Pig, Cow, Horse)  
Molecular Weight: Theoretical: 35 kDa. Actual: 65 kDa.  
Purification: Protein A purified

### Applications

#### Sample:

Lane 1: Mouse Spleen Lysates

Lane 2: Mouse Testis Lysates

Lane 3: Rat Spleen Lysates

Lane 4: Rat Testis Lysates

#### Verified Activity:

Lane 5: Human K562 cell Lysates

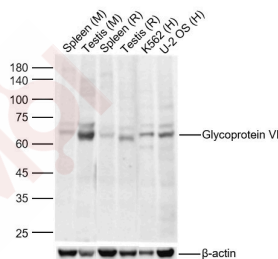
Lane 6: Human U-2 OS cell Lysates

Primary: Anti-Glycoprotein VI (TMAB-00804) at 1/1000 dilution

Secondary: IRDye800CW Goat Anti-Rabbit IgG at 1/20000 dilution

Predicted band size: 35 kDa

Observed band size: 65 kDa



Application: WB

Recommended WB: 1:500-2000

### Properties

Stability & Storage: Store at -20°C or -80°C for 12 months. Avoid repeated freeze-thaw cycles.

Shipping: Shipping with blue ice.

### Antigen Details

Immunogen: KLH conjugated synthetic peptide: human GPVI/Glycoprotein VI  
Antigen Species: Human  
Gene ID: 51206  
Uniprot ID: Q9HCN6  
Synonyms: Gp6;GPVI;MGC138168;Glycoprotein 6

---

### Research Background

This gene encodes a platelet membrane glycoprotein of the immunoglobulin superfamily. The encoded protein is a receptor for collagen and plays a critical role in collagen-induced platelet aggregation and thrombus formation. The encoded protein forms a complex with the Fc receptor gamma-chain that initiates the platelet activation signaling cascade upon collagen binding. Mutations in this gene are a cause of platelet-type bleeding disorder-11 (BDPLT11). Alternatively spliced transcript variants encoding multiple isoforms have been observed for this gene. [provided by RefSeq, Dec 2011].

**Inhibitor · Natural Compounds · Compound Libraries · Recombinant Proteins**

This product is for Research Use Only · Not for Human or Veterinary or Therapeutic Use

Tel:781-999-4286 E\_mail:info@targetmol.com Address:34 Washington Street,Wellesley Hills,MA 02481