

Anti-GPR65 Polyclonal Antibody

Product Details

Ig Type: IgG
Reactivity: Human,Mouse,Rat
Molecular Weight: Theoretical: 37 kDa. Actual: 44 kDa.
Purification: Protein A purified

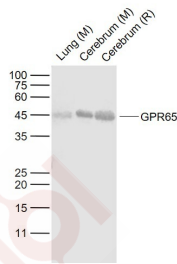
Applications

Sample:

Lane 1: Lung (Mouse) Lysate at 40 µg
Lane 2: Cerebrum (Mouse) Lysate at 40 µg
Lane 3: Cerebrum (Rat) Lysate at 40 µg

Verified Activity:

Primary: Anti-GPR65 (TMAB-00797) at 1/1000 dilution
Secondary: IRDye800CW Goat Anti-Rabbit IgG at 1/20000 dilution
Predicted band size: 40 kDa
Observed band size: 44 kDa



Application: WB
Recommended WB: 1:500-2000

Properties

Stability & Storage: Store at -20°C or -80°C for 12 months. Avoid repeated freeze-thaw cycles.
Shipping: Shipping with blue ice.

Antigen Details

Immunogen: KLH conjugated synthetic peptide: human GPR65
Antigen Species: Human
Gene ID: 8477
Uniprot ID: Q8IYL9
Synonyms: T-cell death-associated gene 8; Dig1; Psychosine receptor; TDAG8; GPCR GPR65; Gpcr25; hTDAG8; G protein-coupled receptor 65
Biology Area: Associated Proteins, Associated Proteins, Cell differentiation, GPCR

Research Background

GPR65 is a member of the G protein coupled receptor family. It has been reported in human in peripheral blood leukocytes, spleen, lymph node, and thymus. The ligand for this protein is psychosine. GPR65 may have a role in activation-induced cell death or differentiation of T cells.

Inhibitor · Natural Compounds · Compound Libraries · Recombinant Proteins

This product is for Research Use Only · Not for Human or Veterinary or Therapeutic Use

Tel:781-999-4286 E_mail:info@targetmol.com Address:34 Washington Street,Wellesley Hills,MA 02481