

## Anti-GPR43 Polyclonal Antibody 2

## Product Details

Ig Type:	IgG
Reactivity:	Mouse (predicted:Rat)
Molecular Weight:	Theoretical: 31 kDa. Actual: 52 kDa.
Purification:	Protein A purified

## Applications

## Sample:

Lane 1: Mouse Lung tissue lysates

Lane 2: Mouse Stomach tissue lysates

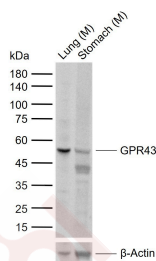
## Verified Activity:

Primary: Anti-GPR43 (TMAB-00796) at 1/1000 dilution

Secondary: IRDye800CW Goat Anti-Rabbit IgG at 1/20000 dilution

Predicted band size: 31 kDa

Observed band size: 52 kDa



Application:	WB
Recommended	WB: 1:500-2000

## Properties

Stability & Storage:	Store at -20°C or -80°C for 12 months. Avoid repeated freeze-thaw cycles.
Shipping:	Shipping with blue ice.

## Antigen Details

Immunogen:	KLH conjugated synthetic peptide: mouse GPR43
Antigen Species:	Mouse
Synonyms:	FFA2R;GPCR 43;GPR 43;FFAR2;GPCR GPR43;Free fatty acid receptor 2;G protein coupled receptor 43;free fatty acid activated receptor 2
Biology Area:	GPCR

## Research Background

G protein-coupled receptors provide attractive targets for drug therapy due to the sheer size and diversity of ligands within this receptor family. G protein-coupled receptor (GPCR) GPR41 and GPR43 are related members of a homologous family of orphan G protein-coupled receptors that are tandemly encoded at a single chromosomal locus in both humans and mice. GPR43 functions as a ligand for short chain fatty acids (SCFAs), notably acetate and

propionate. Bacteria in the gut produce high concentrations of SCFAs, which are subsequently released in the bloodstream, where they exert cellular effects on blood leukocytes, including calcium release, ERK1/2 activation, and inhibition of cAMP accumulation. These effects indicate a role for GPR43 in the recruitment of leukocytes, particularly polymorphonuclear cells, to sites of bacterial infection.

**Inhibitor · Natural Compounds · Compound Libraries · Recombinant Proteins**

This product is for Research Use Only · Not for Human or Veterinary or Therapeutic Use

Tel: 781-999-4286 E\_mail: info@targetmol.com Address: 34 Washington Street, Wellesley Hills, MA 02481