

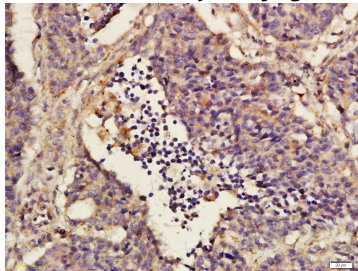
## Anti-GPR40 Polyclonal Antibody

## Product Details

Ig Type:	IgG
Reactivity:	Human (predicted:Mouse,Rat,Dog,Pig)
Molecular Weight:	Theoretical: 32 kDa.
Purification:	Protein A purified

## Applications

Verified Activity: Tissue/cell: human lung carcinoma; 4% Paraformaldehyde-fixed and paraffin-embedded; Antigen retrieval: citrate buffer (0.01M, pH6.0), Boiling bathing for 15 min; Block endogenous peroxidase by 3% Hydrogen peroxide for 30 min; Blocking buffer (normal goat serum) at 37°C for 20 min; Incubation: Anti-GPR40 Polyclonal Antibody, Unconjugated (TMAB-00794) 1:200, overnight at 4°C, followed by conjugation to the secondary antibody and DAb staining.



Application:	IF,IHC-Fr,IHC-P
Recommended	IHC-P: 1:100-500; IHC-Fr: 1:100-500; IF: 1:100-500

## Properties

Stability & Storage:	Store at -20°C or -80°C for 12 months. Avoid repeated freeze-thaw cycles.
Shipping:	Shipping with blue ice.

## Antigen Details

Immunogen:	KLH conjugated synthetic peptide: human GPR40
Antigen Species:	Human
Gene ID:	2864
Uniprot ID:	O14842
Synonyms:	FFAR 1;GPR 40;FFA1R;GPCR 40;GPCR GPR40;G-protein coupled receptor 40;Free fatty acid receptor 1;FFAR1
Biology Area:	GPCR

## Research Background

G protein coupled receptors provide attractive targets for drug therapy due to the sheer size and diversity of ligands within this receptor family. G protein-coupled receptor 40 (GPR40) functions as a cell-surface receptor for long-chain free fatty acids (FFAs). FFAs provide an important energy source, but also function as signaling molecules in various

pathways, notably the process of insulin secretion. In pancreatic tissue, the interaction of long chain FFAs with GPR40 amplifies glucose-stimulated insulin secretion from beta cells, suggesting a possible role for GPR40 in the treatment of diabetes associated with insulin-deficiency. Specifically, the Arg211His polymorphism in the GPR40 gene may contribute to the variation of insulin secretory capacity in Japanese men. Also, GPR40 may be involved in the control of breast cancer cell growth by fatty acids and, therefore, provide a link between fat and cancer.

**Inhibitor · Natural Compounds · Compound Libraries · Recombinant Proteins**

This product is for Research Use Only · Not for Human or Veterinary or Therapeutic Use

Tel:781-999-4286 E\_mail:info@targetmol.com Address:34 Washington Street,Wellesley Hills,MA 02481