

Anti-GPR30 Polyclonal Antibody 2

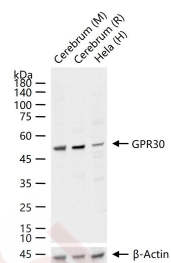
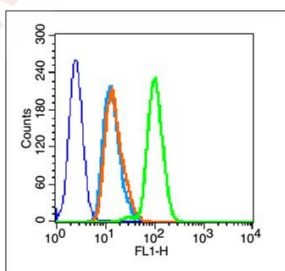
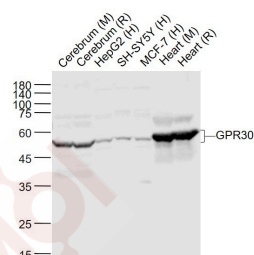
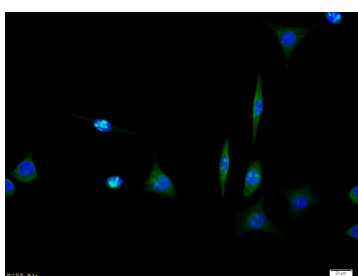
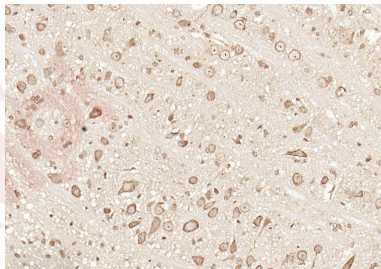
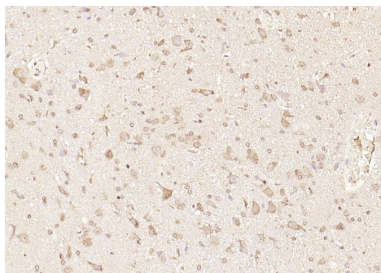
Product Details

Ig Type:	IgG
Reactivity:	Human,Mouse,Rat (predicted:Dog)
Molecular Weight:	Theoretical: 42 kDa. Actual: 53 kDa.
Purification:	Protein A purified

Applications

1. Paraformaldehyde-fixed, paraffin embedded (rat brain); Antigen retrieval by boiling in sodium citrate buffer (pH6.0) for 15 min; Block endogenous peroxidase by 3% hydrogen peroxide for 20 min; Blocking buffer (normal goat serum) at 37°C for 30 min; Antibody incubation with (GPR30) Polyclonal Antibody, Unconjugated (TMAB-00793) at 1:200 overnight at 4°C, followed by operating according to SP Kit (Rabbit) instructions and DAB staining.
2. Paraformaldehyde-fixed, paraffin embedded (mouse brain); Antigen retrieval by boiling in sodium citrate buffer (pH6.0) for 15 min; Block endogenous peroxidase by 3% hydrogen peroxide for 20 min; Blocking buffer (normal goat serum) at 37°C for 30 min; Antibody incubation with (GPR30) Polyclonal Antibody, Unconjugated (TMAB-00793) at 1:200 overnight at 4°C, followed by operating according to SP Kit (Rabbit) instructions and DAB staining.
3. Tissue/cell: SH-SY5Y cell; 4% Paraformaldehyde-fixed; Triton X-100 at room temperature for 20 min; Blocking buffer (normal goat serum) at 37°C for 20 min; Antibody incubation with (GPR30) polyclonal Antibody, Unconjugated (TMAB-00793) 1:100, 90 minutes at 37°C; followed by a FITC conjugated Goat Anti-Rabbit IgG antibody at 37°C for 90 minutes, DAPI (blue) was used to stain the cell nucleus.
4. Sample:
 - Lane 1: Cerebrum (Mouse) Lysate at 40 µg
 - Lane 2: Cerebrum (Rat) Lysate at 40 µg
 - Lane 3: HepG2 (Human) Cell Lysate at 30 µg
 - Lane 4: SH-SY5Y (Human) Cell Lysate at 30 µg
 - Lane 5: MCF-7 (Human) Cell Lysate at 30 µg
 - Lane 6: Heart (Mouse) Lysate at 40 µg
 - Lane 7: Heart (Rat) Lysate at 40 µg
 Primary: Anti-GPR30 (TMAB-00793) at 1/1000 dilution
 Secondary: IRDye800CW Goat Anti-Rabbit IgG at 1/20000 dilution
 Predicted band size: 55 kDa
 Observed band size: 55 kDa
5. Blank control (blue line): A431 cells (fixed with 70% methanol (Overnight at 4°C) and then permeabilized with 90% ice-cold methanol for 20 min at -20°C).
 Primary Antibody (green line): Rabbit Anti-GPR30 antibody (TMAB-00793), Dilution: 1 µg/10⁶ cells;
 Isotype Control Antibody (orange line): Rabbit IgG.
 Secondary Antibody (white blue line): Goat anti-rabbit IgG-FITC, Dilution: 1 µg/test.
6. 25 µg total protein per Lane of various lysates probed with GPR30 polyclonal antibody, unconjugated (TMAB-00793) at 1:1000 dilution and 4°C overnight incubation. Followed by conjugated secondary antibody incubation at RT for 60 min.

Verified Activity:



Application: FCM, ICC/IF, IF, IHC-Fr, IHC-P, WB

Recommended FCM=1 µg/Test; ICC/IF=1:100-500; IF=1:100-500; IHC-Fr=1:100-500; IHC-P=1:100-500; WB=1:500-2000

Properties

Stability & Storage: Store at -20°C or -80°C for 12 months. Avoid repeated freeze-thaw cycles.

Shipping: Shipping with blue ice.

Antigen Details

Immunogen: KLH conjugated synthetic peptide: human GPR30

Antigen Species: Human

Gene ID: 2852

Uniprot ID: Q99527

Synonyms: IL8-related receptor DRY12;G Protein Coupled Receptor 30;mER;Flow-induced endothelial G-protein coupled receptor 1;G-protein coupled estrogen receptor 1;CEPR;FEG-1;GPCR-BR;CMKRL2;Chemokine receptor-like 2;Lymphocyte-derived G-protein coupled receptor;GPER;DRY12;LYGPR;Membrane estrogen receptor

Biology Area: GPCR,More GPCR,Energy Metabolism,Hormone biosynthesis,Estrogen

Research Background

This gene is a member of the G-protein coupled receptor 1 family and encodes a multi-pass membrane protein that localizes to the endoplasmic reticulum. The protein binds estrogen, resulting in intracellular calcium mobilization and synthesis of phosphatidylinositol 3,4,5-trisphosphate in the nucleus. This protein therefore plays a role in the rapid nongenomic signaling events widely observed following stimulation of cells and tissues with estrogen. Alternate transcriptional splice variants which encode the same protein have been characterized. [provided by RefSeq, Jul 2008]

Inhibitor · Natural Compounds · Compound Libraries · Recombinant Proteins

This product is for Research Use Only · Not for Human or Veterinary or Therapeutic Use

Tel:781-999-4286 E_mail:info@targetmol.com Address:34 Washington Street,Wellesley Hills,MA 02481