

Anti-GPR30 Polyclonal Antibody

Product Details

Ig Type:	IgG
Reactivity:	Human,Mouse,Rat
Molecular Weight:	Theoretical: 42 kDa. Actual: 58 kDa.
Purification:	Protein A purified

Applications

1. Blank control (blue line): A431 cells (blue).
Primary Antibody (green line): Rabbit Anti-GPR30 antibody (TMAB-00792)
Dilution: 1 µg/10⁶ cells;
Isotype Control Antibody (orange line): Rabbit IgG.
Secondary Antibody (white blue line): Goat anti-rabbit IgG-FITC
Dilution: 1 µg/test.

Protocol

The cells were fixed with 70% methanol (Overnight at 4°C) and then permeabilized with 90% ice-cold methanol for 20 min at -20°C. Cells stained with Primary Antibody for 30 min at room temperature. The cells were then incubated in 1 X PBS/2% BSA/10% goat serum to block non-specific protein-protein interactions followed by the antibody for 15 min at room temperature. The secondary antibody used for 40 min at room temperature.

2. Blank control: HepG2. Primary Antibody (green line): Rabbit Anti-GPR30 antibody (TMAB-00792)

Dilution: 1 µg/10⁶ cells;

Isotype Control Antibody (orange line): Rabbit IgG.

Secondary Antibody: Goat anti-rabbit IgG-AF647

Dilution: 1 µg/test.

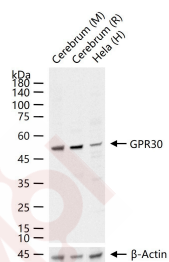
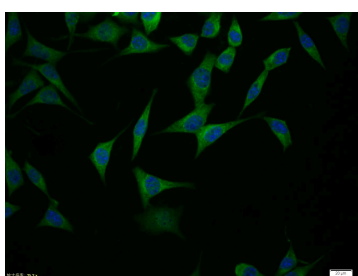
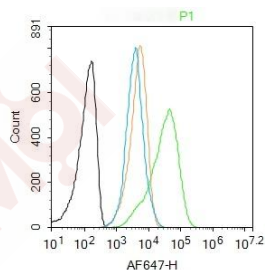
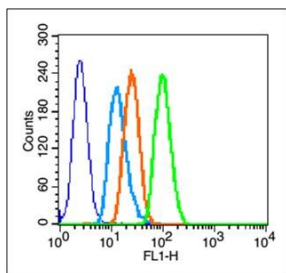
Protocol

The cells were fixed with 4% PFA (10 min at room temperature) and then permeabilized with 0.1% PBST for 20 min at room temperature. The cells were then incubated in 5% BSA to block non-specific protein-protein interactions for 30 min at room temperature. Cells stained with Primary Antibody for 30 min at room temperature. The secondary antibody used for 40 min at room temperature.

3. Tissue/cell: SH-SY5Y cell; 4% Paraformaldehyde-fixed; Triton X-100 at room temperature for 20 min; Blocking buffer (normal goat serum) at 37°C for 20 min; Antibody incubation with (GPR30) polyclonal Antibody, Unconjugated (TMAB-00792) 1:100, 90 minutes at 37°C; followed by a FITC conjugated Goat Anti-Rabbit IgG antibody at 37°C for 90 minutes, DAPI (blue) was used to stain the cell nucleus.

4. 25 µg total protein per Lane of various lysates probed with GPR30 polyclonal antibody, unconjugated (TMAB-00792) at 1:1000 dilution and 4°C overnight incubation. Followed by conjugated secondary antibody incubation at RT for 60 min.

Verified Activity:



Application: FCM,IF,IHC-Fr,IHC-P,WB

Recommended FCM=1 µg/Test; IF=1:100-500; IHC-Fr=1:100-500; IHC-P=1:100-500; WB=1:500-2000

Properties

Stability & Storage: Store at -20°C or -80°C for 12 months. Avoid repeated freeze-thaw cycles.

Shipping: Shipping with blue ice.

Antigen Details

Immunogen: KLH conjugated synthetic peptide: human GPR30

Antigen Species: Human

Gene ID: 2852

Uniprot ID: Q99527

Synonyms: GPER;Lymphocyte-derived G-protein coupled receptor;Chemokine receptor-like 2;DRY12;Flow-induced endothelial G-protein coupled receptor 1;FEG-1;Membrane estrogen receptor;LYGPR;IL8-related receptor DRY12;GPCR-BR;CMKRL2;CEPR;mER;G-protein coupled estrogen receptor 1;G Protein Coupled Receptor 30

Biology Area: GPCR,More GPCR,Energy Metabolism,Hormone biosynthesis,Estrogen

Research Background

This gene is a member of the G-protein coupled receptor 1 family and encodes a multi-pass membrane protein that localizes to the endoplasmic reticulum. The protein binds estrogen, resulting in intracellular calcium mobilization and synthesis of phosphatidylinositol 3,4,5-trisphosphate in the nucleus. This protein therefore plays a role in the rapid nongenomic signaling events widely observed following stimulation of cells and tissues with estrogen. Alternate transcriptional splice variants which encode the same protein have been characterized. [provided by RefSeq, Jul 2008]

Inhibitor · Natural Compounds · Compound Libraries · Recombinant Proteins

This product is for Research Use Only · Not for Human or Veterinary or Therapeutic Use

Tel: 781-999-4286 E_mail: info@targetmol.com Address: 34 Washington Street, Wellesley Hills, MA 02481