

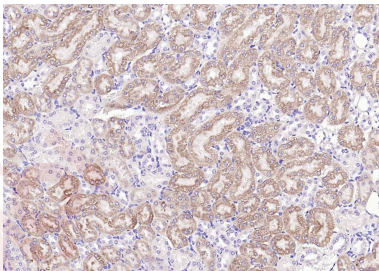
## Anti-GPLD1 Polyclonal Antibody

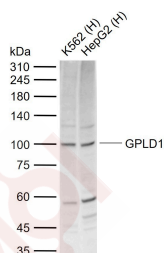
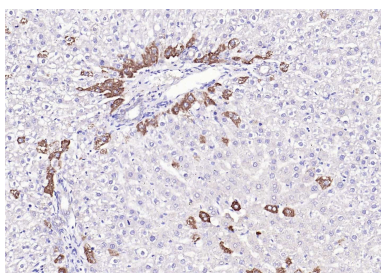
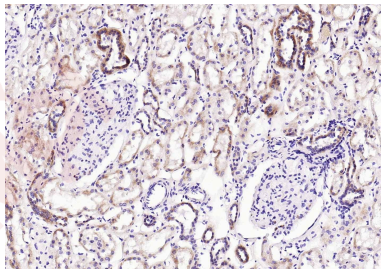
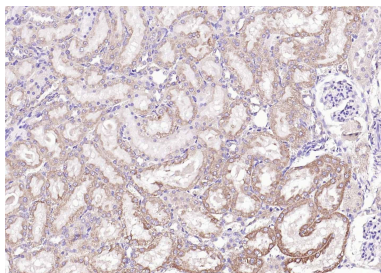
### Product Details

|                   |                                       |
|-------------------|---------------------------------------|
| Ig Type:          | IgG                                   |
| Reactivity:       | Human,Mouse,Rat (predicted:Horse)     |
| Molecular Weight: | Theoretical: 90 kDa. Actual: 100 kDa. |
| Purification:     | Protein A purified                    |

### Applications

1. Paraformaldehyde-fixed, paraffin embedded (mouse kidney); Antigen retrieval by boiling in sodium citrate buffer (pH6.0) for 15 min; Block endogenous peroxidase by 3% hydrogen peroxide for 20 min; Blocking buffer (normal goat serum) at 37°C for 30 min; Incubation with (GPLD1) Polyclonal Antibody, Unconjugated (TMAB-00786) at 1:200 overnight at 4°C, followed by operating according to SP Kit (Rabbit) instructions and DAB staining.
2. Paraformaldehyde-fixed, paraffin embedded (rat kidney); Antigen retrieval by boiling in sodium citrate buffer (pH6.0) for 15 min; Block endogenous peroxidase by 3% hydrogen peroxide for 20 min; Blocking buffer (normal goat serum) at 37°C for 30 min; Incubation with (GPLD1) Polyclonal Antibody, Unconjugated (TMAB-00786) at 1:200 overnight at 4°C, followed by operating according to SP Kit (Rabbit) instructions and DAB staining.
3. Paraformaldehyde-fixed, paraffin embedded (human kidney); Antigen retrieval by boiling in sodium citrate buffer (pH6.0) for 15 min; Block endogenous peroxidase by 3% hydrogen peroxide for 20 min; Blocking buffer (normal goat serum) at 37°C for 30 min; Incubation with (GPLD1) Polyclonal Antibody, Unconjugated (TMAB-00786) at 1:200 overnight at 4°C, followed by operating according to SP Kit (Rabbit) instructions and DAB staining.
4. Paraformaldehyde-fixed, paraffin embedded (rat liver); Antigen retrieval by boiling in sodium citrate buffer (pH6.0) for 15 min; Block endogenous peroxidase by 3% hydrogen peroxide for 20 min; Blocking buffer (normal goat serum) at 37°C for 30 min; Incubation with (GPLD1) Polyclonal Antibody, Unconjugated (TMAB-00786) at 1:200 overnight at 4°C, followed by operating according to SP Kit (Rabbit) instructions and DAB staining.
5. Sample:  
Lane 1: Human K562 cell lysates  
Lane 2: Human HepG2 cell lysates  
Primary: Anti-GPLD1 (TMAB-00786) at 1/1000 dilution  
Secondary: IRDye800CW Goat Anti-Rabbit IgG at 1/20000 dilution  
Predicted band size: 90 kDa  
Observed band size: 100 kDa





Application: IF,IHC-Fr,IHC-P,WB

Recommended WB: 1:500-2000; IHC-P: 1:100-500; IHC-Fr: 1:100-500; IF: 1:50-200

### Properties

Stability & Storage: Store at -20°C or -80°C for 12 months. Avoid repeated freeze-thaw cycles.

Shipping: Shipping with blue ice.

### Antigen Details

Immunogen: KLH conjugated synthetic peptide: human GPLD1/GPI-PLD

Antigen Species: Human

Gene ID: 2822

Uniprot ID: P80108

Synonyms: GPIPLD;GPLD1;GPI-PLD;PI-G PLD;GPI-specific phospholipase D;Glycosyl-phosphatidylinositol-specific phospholipase D;GPIPLDM;PIGPLD;Glycoprotein phospholipase D;PIGPLD1;Phosphatidylinositol glycan specific phospholipase D;PHLD

Biology Area: Serum Proteins

Research Background

Phosphatidylinositol-glycan-specific phospholipase D (GPI-PLD) is a high-density lipoprotein-associated protein found on chromosome 6p22 that specifically hydrolyzes the inositol phosphate linkage in proteins anchored by phosphatidylinositol-glycans (PI-Gs). GPI-PLD is found in serum, liver, cerebrospinal fluid and in milk. The majority of plasma GPI-PLD appears to be specifically associated with a small, discrete and minor fraction of lipoproteins containing apoA-I and apoA-IV. Serum GPI-PLD activity is reduced over 75% in systemic inflammatory response syndrome and the downregulation of GPI-PLD could play an important role in the control of proinflammatory responses.

**Inhibitor · Natural Compounds · Compound Libraries · Recombinant Proteins**

This product is for Research Use Only · Not for Human or Veterinary or Therapeutic Use

Tel:781-999-4286 E\_mail:info@targetmol.com Address:34 Washington Street,Wellesley Hills,MA 02481