

Anti-GM-CSF/CSF2 Polyclonal Antibody

Product Details

Ig Type: IgG
Reactivity: Pig (predicted:Human,Mouse,Rat,Chicken,Dog,Cow,Rabbit,Recombinant protein)
Molecular Weight: Theoretical: 14 kDa. Actual: 33/15 kDa.
Purification: Protein A purified

Applications

Sample:

Lane 1: Recombined Trx/His-tag porcine GM-CSF protein (Aa18-144) at 2 μ g

Lane 2: Recombined His-tag porcine GM-CSF protein

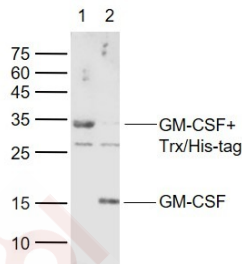
Verified Activity:

Primary: Anti-GM-CSF (TMAB-00782) at 1/1000 dilution

Secondary: IRDye800CW Goat Anti-Rabbit IgG at 1/20000 dilution

Predicted band size: 33/15 kDa

Observed band size: 33/15 kDa



Application: WB

Recommended WB: 1:500-2000

Properties

Stability & Storage: Store at -20°C or -80°C for 12 months. Avoid repeated freeze-thaw cycles.

Shipping: Shipping with blue ice.

Antigen Details

Immunogen: KLH conjugated synthetic peptide: human GM-CSF

Antigen Species: Human

Gene ID: 1437

Synonyms: GMCSF;CSF2;GM-CSF;colony stimulating factor 2 (granulocyte-macrophage)

Research Background

The protein encoded by this gene is a cytokine that controls the production, differentiation, and function of granulocytes and macrophages. The active form of the protein is found extracellularly as a homodimer. This gene has been localized to a cluster of related genes at chromosome region 5q31, which is known to be associated with interstitial deletions in the 5q- syndrome and acute myelogenous leukemia. Other genes in the cluster include those encoding interleukins 4, 5, and 13. [provided by RefSeq, Jul 2008].

Inhibitor · Natural Compounds · Compound Libraries · Recombinant Proteins

This product is for Research Use Only · Not for Human or Veterinary or Therapeutic Use

Tel:781-999-4286 E_mail:info@targetmol.com Address:34 Washington Street,Wellesley Hills,MA 02481