

Anti-GLUL Polyclonal Antibody

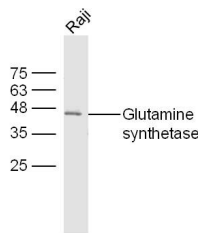
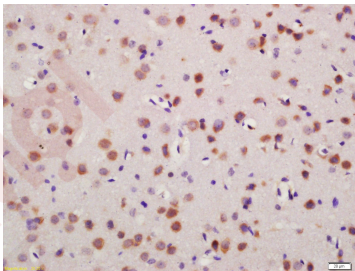
Product Details

Ig Type: IgG
Reactivity: Mouse,Rat (predicted:Human,Pig,Cow,Sheep)
Molecular Weight: Theoretical: 42 kDa. Actual: 42 kDa.
Purification: Protein A purified

Applications

1. Tissue/cell: mouse brain tissue; 4% Paraformaldehyde-fixed and paraffin-embedded; Antigen retrieval: citrate buffer (0.01M, pH6.0), Boiling bathing for 15 min; Block endogenous peroxidase by 3% Hydrogen peroxide for 30 min; Blocking buffer (normal goat serum) at 37°C for 20 min;
Incubation: Anti-Glutamine synthetase Polyclonal Antibody, Unconjugated (TMAB-00780) 1:200, overnight at 4°C, followed by conjugation to the secondary antibody and DAb staining.

2. Sample: Raji Cell (Human) Lysate at 40 µg
Primary: Anti-Glutamine synthetase (TMAB-00780) at 1/300 dilution
Secondary: IRDye800CW Goat Anti-Rabbit IgG at 1/20000 dilution
Predicted band size: 42 kDa
Observed band size: 42 kDa



Application: ELISA,IF,IHC-Fr,IHC-P,WB

Recommended WB: 1:500-2000; IHC-P: 1:100-500; IHC-Fr: 1:100-500; IF: 1:100-500; ELISA: 1:5000-10000

Properties

Stability & Storage: Store at -20°C or -80°C for 12 months. Avoid repeated freeze-thaw cycles.

Shipping: Shipping with blue ice.

Antigen Details

Immunogen: KLH conjugated synthetic peptide: human Glutamine synthetase

Antigen Species: Human

Gene ID: 2752

Uniprot ID: P15104

Synonyms: GLUL; Glutamine Synthetase; Glutamate-Ammonia Ligase; Glutamate Decarboxylase; GLNS; GS

Biology Area: Alzheimer's disease, Glutamate

Research Background

Glutamine Synthetase catalyzes the conversion of ammonia and glutamate to glutamine. It is found in astrocytes as an octamer of identical 42 kDa subunits. The function of Glutamine Synthetase is the detoxification of brain ammonia. It also has an important role in the metabolic regulation of neurotransmitter glutamate. Because of the multiple functions and importance of Glutamine Synthetase in cellular metabolism, both catalytic activities and synthesis are highly regulated. The activity of Glutamine Synthetase is controlled by adenylation. Its activity is decreased in the cerebral cortex of brains affected by Alzheimer's disease, particularly in the vicinity of senile plaques. It is also decreased under conditions of glucose deprivation. The level of expression of Glutamine Synthetase is increased during ischemia in vivo or hypoxia in culture.

Inhibitor · Natural Compounds · Compound Libraries · Recombinant Proteins

This product is for Research Use Only · Not for Human or Veterinary or Therapeutic Use

Tel: 781-999-4286 E_mail: info@targetmol.com Address: 34 Washington Street, Wellesley Hills, MA 02481