

## Anti-GLS1 Polyclonal Antibody

### Product Details

Ig Type: IgG  
Reactivity: Human, Mouse, Rat  
Molecular Weight: Theoretical: 72 kDa. Actual: 60-65 kDa.  
Purification: Protein A purified

### Applications

#### 1. Sample:

Lane 1: Human U251 cell lysates

Lane 2: Human HeLa cell lysates

Primary: Anti-GLS1 (TMAB-00779) at 1/1000 dilution

Secondary: IRDye800CW Goat Anti-Rabbit IgG at 1/20000 dilution

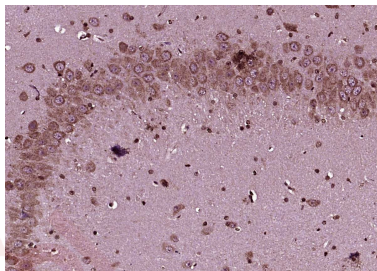
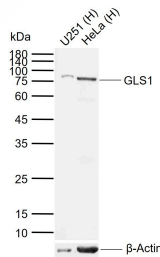
Predicted band size: 72 kDa

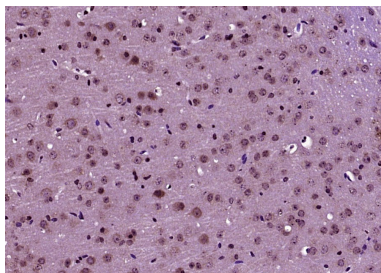
Observed band size: 75 kDa

#### Verified Activity:

2. Paraformaldehyde-fixed, paraffin embedded (Rat brain); Antigen retrieval by boiling in sodium citrate buffer (pH6.0) for 15 min; Block endogenous peroxidase by 3% hydrogen peroxide for 20 min; Blocking buffer (normal goat serum) at 37°C for 30 min; Antibody incubation with (GLS1) Polyclonal Antibody, Unconjugated (TMAB-00779) at 1:400 overnight at 4°C, followed by operating according to SP Kit (Rabbit) instructions and DAB staining.

3. Paraformaldehyde-fixed, paraffin embedded (Mouse brain); Antigen retrieval by boiling in sodium citrate buffer (pH6.0) for 15 min; Block endogenous peroxidase by 3% hydrogen peroxide for 20 min; Blocking buffer (normal goat serum) at 37°C for 30 min; Antibody incubation with (GLS1) Polyclonal Antibody, Unconjugated (TMAB-00779) at 1:400 overnight at 4°C, followed by operating according to SP Kit (Rabbit) instructions and DAB staining.





Application: ELISA,WB

Recommended ELISA=1:5000-10000; WB=1:500-2000

---

### Properties

Stability & Storage: Store at -20°C or -80°C for 12 months. Avoid repeated freeze-thaw cycles.

Shipping: Shipping with blue ice.

---

### Antigen Details

Immunogen: KLH conjugated synthetic peptide: human GLS1

Antigen Species: Human

Gene ID: 2744

Uniprot ID: O94925

Synonyms: L-glutamine amidohydrolase;GLS;EIEE71;K-glutaminase;GAC;KGA;GLSK;Glutaminase kidney isoform, mitochondrial;GAM;EC:3.5.1.2;KIAA0838;CASGID;GDPAG;AAD20;DEE71

Biology Area: Amino acid metabolism,Glutamate,Amino Acids

---

### Research Background

This gene encodes the K-type mitochondrial glutaminase. The encoded protein is an phosphate-activated amidohydrolase that catalyzes the hydrolysis of glutamine to glutamate and ammonia. This protein is primarily expressed in the brain and kidney plays an essential role in generating energy for metabolism, synthesizing the brain neurotransmitter glutamate and maintaining acid-base balance in the kidney. Alternate splicing results in multiple transcript variants. [provided by RefSeq, Jan 2012].

**Inhibitor · Natural Compounds · Compound Libraries · Recombinant Proteins**

This product is for Research Use Only · Not for Human or Veterinary or Therapeutic Use

Tel:781-999-4286 E\_mail:info@targetmol.com Address:34 Washington Street,Wellesley Hills,MA 02481

---