

Anti-GJA1 Polyclonal Antibody 2

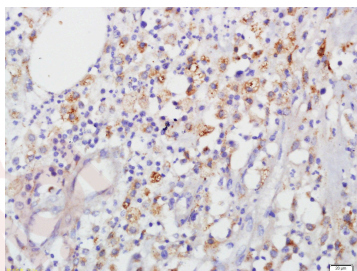
Product Details

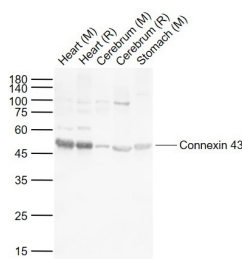
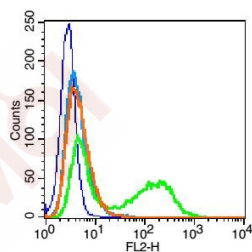
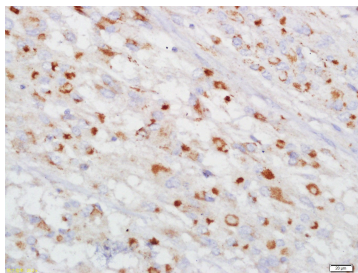
Ig Type:	IgG
Reactivity:	Human,Mouse,Rat (predicted:Chicken,Dog,Pig,Cow,Rabbit)
Molecular Weight:	Theoretical: 42 kDa. Actual: 48 kDa.
Purification:	Protein A purified

Applications

1. Tissue/cell: human cervix carcinoma; 4% Paraformaldehyde-fixed and paraffin-embedded; Antigen retrieval: citrate buffer (0.01M, pH6.0), Boiling bathing for 15 min; Block endogenous peroxidase by 3% Hydrogen peroxide for 30 min; Blocking buffer (normal goat serum) at 37°C for 20 min; Incubation: Anti-Connexin 43 Polyclonal Antibody, Unconjugated (TMAB-00773) 1:500, overnight at 4°C, followed by conjugation to the secondary antibody and DAb staining.
2. Tissue/cell: human brain glioma; 4% Paraformaldehyde-fixed and paraffin-embedded; Antigen retrieval: citrate buffer (0.01M, pH6.0), Boiling bathing for 15 min; Block endogenous peroxidase by 3% Hydrogen peroxide for 30 min; Blocking buffer (normal goat serum) at 37°C for 20 min; Incubation: Anti-Connexin 43 Polyclonal Antibody, Unconjugated (TMAB-00773) 1:500, overnight at 4°C, followed by conjugation to the secondary antibody and DAb staining.
3. Blank control (blue): HUVEC cells (fixed with 2% paraformaldehyde (10 min)). Primary Antibody: Rabbit Anti-Connexin 43 antibody (TMAB-00773), Dilution: 1 µg in 100 µL 1X PBS containing 0.5% BSA; Isotype Control Antibody: Rabbit Igg (orange),used under the same conditions); Secondary Antibody: Goat anti-rabbit IgG-Pe (white blue), Dilution: 1:200 in 1 X PBS containing 0.5% BSA.
4. Sample:
Lane 1: Mouse Heart tissue lysates
Lane 2: Rat Heart tissue lysates
Lane 3: Mouse Cerebrum tissue lysates
Lane 4: Rat Cerebrum tissue lysates
Lane 5: Mouse Stomach tissue lysates
Primary: Anti-Connexin 43 (TMAB-00773) at 1/1000 dilution
Secondary: IRDye800CW Goat Anti-Rabbit IgG at 1/20000 dilution
Predicted band size: 43 kDa
Observed band size: 48 kDa

Verified Activity:





Application: FCM,IF,IHC-Fr,IHC-P,WB

Recommended WB: 1:500-2000; IHC-P: 1:100-500; IHC-Fr: 1:100-500; IF: 1:100-500; FCM: 1µg/Test

Properties

Stability & Storage: Store at -20°C or -80°C for 12 months. Avoid repeated freeze-thaw cycles.

Shipping: Shipping with blue ice.

Antigen Details

Immunogen: KLH conjugated synthetic peptide: human Connexin 43

Antigen Species: Human

Gene ID: 2697

Uniprot ID: P17302

Synonyms: Connexin-43 (Cx43);GJAL;Gap junction alpha-1 protein;GJA1;Gap junction 43 kDa heart protein

Biology Area: Cell junction molecules,Cardiac arrhythmias,Gap Junctions

Research Background

This gene is a member of the connexin gene family. The encoded protein is a component of gap junctions, which are composed of arrays of intercellular channels that provide a route for the diffusion of low molecular weight materials from cell to cell. The encoded protein is the major protein of gap junctions in the heart that are thought to have a crucial role in the synchronized contraction of the heart and in embryonic development. A related intronless pseudogene has been mapped to chromosome 5. Mutations in this gene have been associated with oculodentodigital dysplasia and heart malformations. [provided by RefSeq].

Inhibitor · Natural Compounds · Compound Libraries · Recombinant Proteins

This product is for Research Use Only · Not for Human or Veterinary or Therapeutic Use

Tel:781-999-4286 E_mail:info@targetmol.com Address:34 Washington Street,Wellesley Hills,MA 02481