

Anti-GIP Polyclonal Antibody

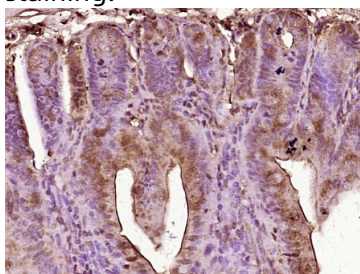
Product Details

Ig Type:	IgG
Reactivity:	Mouse (predicted:Human,Rat,Pig,Cow)
Molecular Weight:	Theoretical: 5/17 kDa.
Purification:	Protein A purified

Applications

Verified Activity:

Paraformaldehyde-fixed, paraffin embedded (mouse intestine tissue); Antigen retrieval by boiling in sodium citrate buffer (pH6.0) for 15 min; Block endogenous peroxidase by 3% hydrogen peroxide for 20 min; Blocking buffer (normal goat serum) at 37°C for 30 min; Antibody incubation with (GIP) Polyclonal Antibody, Unconjugated (TMAB-00770) at 1:400 overnight at 4°C, followed by operating according to SP Kit (Rabbit) instructions and DAB staining.



Application:	IF,IHC-Fr,IHC-P
Recommended	IHC-P: 1:100-500; IHC-Fr: 1:100-500; IF: 1:100-500

Properties

Stability & Storage:	Store at -20°C or -80°C for 12 months. Avoid repeated freeze-thaw cycles.
Shipping:	Shipping with blue ice.

Antigen Details

Immunogen:	KLH conjugated synthetic peptide: human GIP
Antigen Species:	Human
Gene ID:	2695
Uniprot ID:	P09681
Synonyms:	GIP;Incretin
Biology Area:	Hormones,Insulin / Insulin-like,GPCR

Research Background

GIP (Gastric Inhibitory polypeptide) belongs to the glucagon superfamily. The encoded protein is important in maintaining glucose homeostasis as it is a potent stimulator of insulin secretion from pancreatic beta-cells following food ingestion and nutrient absorption. This gene stimulates insulin secretion via its G protein-coupled receptor

A DRUG SCREENING EXPERT

activation of adenylyl cyclase and other signal transduction pathways. It is a relatively poor inhibitor of gastric acid secretion. Mature GIP is a highly conserved 42 amino acid polypeptide belonging to the glucagon family. GIP is highly expressed as a pre-pro-protein in the duodenum and the jejunum. The mature secreted polypeptide acts as a potent stimulator of insulin secretion and a poor inhibitor of gastric acid secretion.

Inhibitor · Natural Compounds · Compound Libraries · Recombinant Proteins

This product is for Research Use Only · Not for Human or Veterinary or Therapeutic Use

Tel:781-999-4286 E_mail:info@targetmol.com Address:34 Washington Street,Wellesley Hills,MA 02481