

Anti-GFRAL/GFR alpha-like Polyclonal Antibody

Product Details

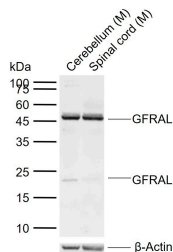
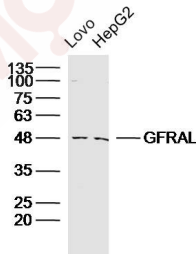
Ig Type: IgG
Reactivity: Human, Mouse (predicted: Rat, Horse, Rabbit)
Molecular Weight: Theoretical: 42 kDa. Actual: 47,23 kDa.
Purification: Protein A purified

Applications

1. Sample:
LOVO Cell (Human) Lysate at 30 μ g
HepG2 Cell (Human) lysate at 30 μ g
Primary: Anti-GFRAL (TMAB-00767) at 1/300 dilution
Secondary: IRDye800CW Goat Anti-Rabbit IgG at 1/20000 dilution
Predicted band size: 42 kDa
Observed band size: 47 kDa

2. Sample:
Lane 1: Mouse Cerebellum tissue lysates
Lane 2: Mouse Spinal cord tissue lysates
Primary: Anti-GFRAL (TMAB-00767) at 1/500 dilution
Secondary: IRDye800CW Goat Anti-Rabbit IgG at 1/20000 dilution
Predicted band size: 42 kDa
Observed band size: 47,23 kDa

Verified Activity:



Application: WB
Recommended WB: 1:500-2000

Properties

Stability & Storage: Store at -20°C or -80°C for 12 months. Avoid repeated freeze-thaw cycles.

Shipping: Shipping with blue ice.

Antigen Details

Immunogen: KLH conjugated synthetic peptide: human GFRAL

Antigen Species: Human

Gene ID: 389400

Uniprot ID: Q6UXV0

Synonyms: GFRAL;GRAL;GFRAL/GFR α -like Protein;GFR alpha-like;GFR α -like;C6orf144

Biology Area: Other Antibodies

Inhibitor · Natural Compounds · Compound Libraries · Recombinant Proteins

This product is for Research Use Only · Not for Human or Veterinary or Therapeutic Use

Tel:781-999-4286 E_mail:info@targetmol.com Address:34 Washington Street,Wellesley Hills,MA 02481