

Anti-GFP Polyclonal Antibody

Product Details

Ig Type:	IgG
Reactivity:	Species independent
Molecular Weight:	Actual: 30 kDa.
Purification:	Protein A purified

Applications

1. Sample:

GFP-Tagged fusion protein Overexpression E.coli Lysate at 4 μ g

Primary:

Anti-GFP (TMAB-00765) at 1/20000 dilution

Secondary: IRDye800CW Goat Anti-Rabbit IgG at 1/20000 dilution

Predicted band size: 28 kDa

Observed band size: 30 kDa

Verified Activity:

2. Sample:

Lane 1: GFP-Tagged fusion protein (full length) Overexpression E.coli Lysate at 4 μ g

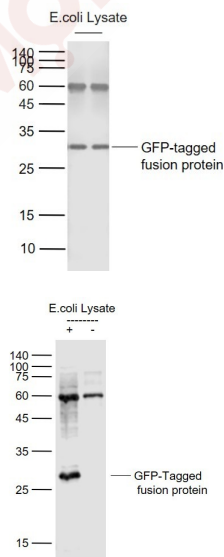
Lane 2: Control (-) E.coli Lysate at 4 μ g

Primary: Anti-GFP (TMAB-00765) at 1/1000 dilution

Secondary: IRDye800CW Goat Anti-Rabbit IgG at 1/20000 dilution

Predicted band size: 28 kDa

Observed band size: 28 kDa



Application: ELISA,FCM,ICC/IF,IF,IHC-Fr,IHC-P,WB

Recommended ELISA=1:1000-5000; FCM=1 μ g/Test; ICC/IF=1:100-500; IF=1:200-1000; IHC-Fr=1:200-1000; IHC-P=1:200-1000; WB=1:20000-50000

Properties

Stability & Storage: Store at -20°C or -80°C for 12 months. Avoid repeated freeze-thaw cycles.

Shipping: Shipping with blue ice.

Antigen Details

Immunogen: KLH conjugated synthetic peptide: belt jellyfish GFP

Synonyms: GFP Protein

Biology Area: GFP

Research Background

Enhanced Blue Fluorescent Protein (EBFP) emits a strong blue fluorescence. EBFP can be used as protein "tags" to study the sub-cellular localization of proteins and/or their translocation upon stimulation or as markers for transfection in transient and stable expression systems.

Inhibitor · Natural Compounds · Compound Libraries · Recombinant Proteins

This product is for Research Use Only · Not for Human or Veterinary or Therapeutic Use

Tel:781-999-4286 E_mail:info@targetmol.com Address:34 Washington Street,Wellesley Hills,MA 02481