

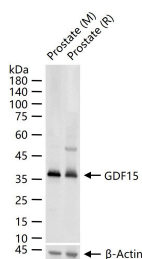
Anti-GDF-15 Polyclonal Antibody

Product Details

Ig Type:	IgG
Reactivity:	Mouse,Rat (predicted:Human)
Molecular Weight:	Theoretical: 12.5/34 kDa. Actual: 36 kDa.
Purification:	Protein A purified

Applications

Verified Activity: 25 µg total protein per Lane of various lysates probed with GDF15 polyclonal antibody, unconjugated (TMAB-00756) at 1:1000 dilution and 4°C overnight incubation. Followed by conjugated secondary antibody incubation at RT for 60 min.



Application:	WB
Recommended	WB: 1:500-2000

Properties

Stability & Storage: Store at -20°C or -80°C for 12 months. Avoid repeated freeze-thaw cycles.
Shipping: Shipping with blue ice.

Antigen Details

Immunogen:	KLH conjugated synthetic peptide: human GDF-15
Antigen Species:	Human
Gene ID:	9518
Uniprot ID:	Q99988
Synonyms:	NAG-1;Placental TGF-β;PTGF-beta;RG-1;PTGFB;PLAB;PTGFBPTGF-beta;PTGFBPTGF-β;GDF15;GDF-15;MIC1;PTGF-β;MIC-1;Placental TGF-beta;PDF
Biology Area:	Hormones,Cytokines,Bone,Hormones,TGF

Research Background

Growth differentiation factor 15 (GDF15) is a member of the bone morphogenetic protein (BMP) family and the TGF-beta superfamily. It has been implicated in a variety of functions directly related to tumorigenicity including antiproliferative and pro-apoptotic effects. BMP proteins are secreted growth factors that are characterized by seven conserved cysteine residues. In general, they are regulators of cell growth and differentiation in both embryonic and adult tissues. GDF15 is an important downstream mediator of DNA damage signaling and a transcriptional target of p53.

Inhibitor · Natural Compounds · Compound Libraries · Recombinant Proteins

This product is for Research Use Only · Not for Human or Veterinary or Therapeutic Use

Tel:781-999-4286 E_mail:info@targetmol.com Address:34 Washington Street,Wellesley Hills,MA 02481