

Anti-GCG Antibody (6G692)

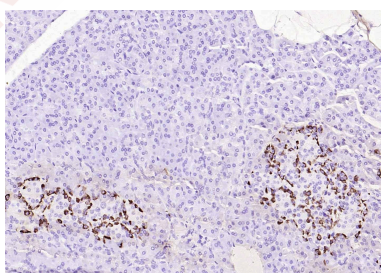
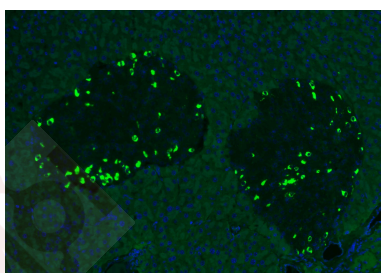
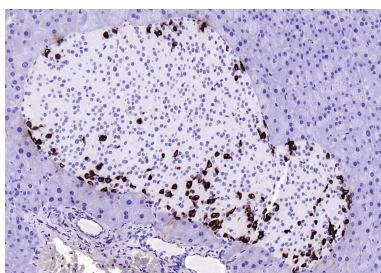
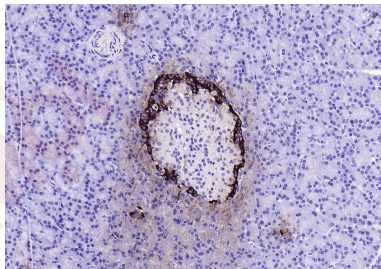
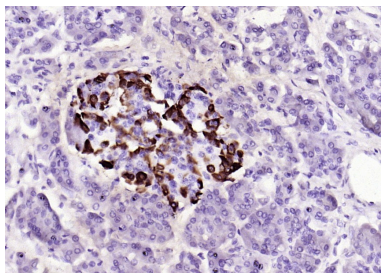
Product Details

Ig Type:	IgG
Reactivity:	Human,Mouse,Rat
Molecular Weight:	Theoretical: 21 kDa.
Clone:	6G692
Purification:	Protein G purified

Applications

1. Paraformaldehyde-fixed, paraffin embedded (human pancreatic cancer); Antigen retrieval by boiling in sodium citrate buffer (pH6.0) for 15 min; Block endogenous peroxidase by 3% hydrogen peroxide for 20 min; Blocking buffer (normal goat serum) at 37°C for 30 min; Antibody incubation with (GLP-1 (1G9)) Monoclonal Antibody, Unconjugated (TMAB-00751) at 1:200 overnight at 4°C, followed by operating according to SP Kit (Mouse) instructions and DAB staining.
2. Paraformaldehyde-fixed, paraffin embedded (Mouse pancreas); Antigen retrieval by boiling in sodium citrate buffer (pH6.0) for 15 min; Block endogenous peroxidase by 3% hydrogen peroxide for 20 min; Blocking buffer (normal goat serum) at 37°C for 30 min; Antibody incubation with (GLP-1 (1G9)) Monoclonal Antibody, Unconjugated (TMAB-00751) at 1:200 overnight at 4°C, followed by operating according to SP Kit (Mouse) instructions and DAB staining.
3. Paraformaldehyde-fixed, paraffin embedded (Rat pancreas); Antigen retrieval by boiling in sodium citrate buffer (pH6.0) for 15 min; Block endogenous peroxidase by 3% hydrogen peroxide for 20 min; Blocking buffer (normal goat serum) at 37°C for 30 min; Antibody incubation with (GLP-1 (1G9)) Monoclonal Antibody, Unconjugated (TMAB-00751) at 1:200 overnight at 4°C, followed by operating according to SP Kit (Mouse) instructions and DAB staining.
4. Paraformaldehyde-fixed, paraffin embedded (rat pancreas); Antigen retrieval by boiling in sodium citrate buffer (pH6.0) for 15 min; Blocking buffer (normal goat serum) at 37°C for 30 min; Antibody incubation with (GLP-1 (1G9)) Monoclonal Antibody, Unconjugated (TMAB-00751) at 1:500 overnight at 4°C, followed by a conjugated Goat Anti-Mouse IgG antibody (YF488) for 90 minutes, and DAPI for nucleus staining.
5. Paraformaldehyde-fixed, paraffin embedded (human pancreas); Antigen retrieval by boiling in sodium citrate buffer (pH6.0) for 15 min; Block endogenous peroxidase by 3% hydrogen peroxide for 20 min; Blocking buffer (normal goat serum) at 37°C for 30 min; Antibody incubation with (GLP-1 (1G9)) Monoclonal Antibody, Unconjugated (TMAB-00751) at 1:200 overnight at 4°C, followed by operating according to SP Kit (Mouse) instructions and DAB staining.

Verified Activity:



Application: IF,IHC-Fr,IHC-P

Recommended IHC-P: 1:100-500; IHC-Fr: 1:100-500; IF: 1:100-500

Properties

Stability & Storage: Store at -20°C or -80°C for 12 months. Avoid repeated freeze-thaw cycles.

Shipping: Shipping with blue ice.

Antigen Details

Immunogen:	KLH conjugated synthetic peptide: human GLP-1
Antigen Species:	Human
Gene ID:	2641
Uniprot ID:	P01275
Synonyms:	OXM;Incretin Hormone;Glucagon-Like Peptide 2;GCG;GLP-2;Glucagon;Glicentin-Related Polypeptide;Glicentin;GRPP;Oxyntomodulin;OXY;Glucagon-Like Peptide 1;GLP-1
Biology Area:	Integration of energy metabolism,Hormones,Endoderm,Integration of energy,Cancer, Hormones,Endoderm

Research Background

Glucagon plays a key role in glucose metabolism and homeostasis. Regulates blood glucose by increasing gluconeogenesis and decreasing glycolysis. A counterregulatory hormone of insulin, raises plasma glucose levels in response to insulin-induced hypoglycemia. Plays an important role in initiating and maintaining hyperglycemic conditions in diabetes.

Inhibitor · Natural Compounds · Compound Libraries · Recombinant Proteins

This product is for Research Use Only· Not for Human or Veterinary or Therapeutic Use

Tel:781-999-4286 E_mail:info@targetmol.com Address:34 Washington Street,Wellesley Hills,MA 02481