

Anti-GATA6 Polyclonal Antibody

Product Details

Ig Type:	IgG
Reactivity:	Mouse (predicted:Human,Rat,Chicken,Dog,Pig,Cow,Rabbit,Sheep)
Molecular Weight:	Theoretical: 60 kDa. Actual: 60 kDa.
Purification:	Protein A purified

Applications

1. Paraformaldehyde-fixed, paraffin embedded (mouse intestine tissue); Antigen retrieval by boiling in sodium citrate buffer (pH6.0) for 15 min; Block endogenous peroxidase by 3% hydrogen peroxide for 20 min; Blocking buffer (normal goat serum) at 37°C for 30 min; Antibody incubation with (GATA6) Polyclonal Antibody, Unconjugated (TMAB-00749) at 1:400 overnight at 4°C, followed by operating according to SP Kit (Rabbit) instructions and DAB staining.

Verified Activity:

2. Sample:

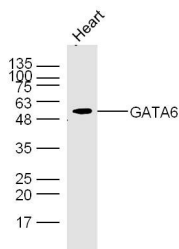
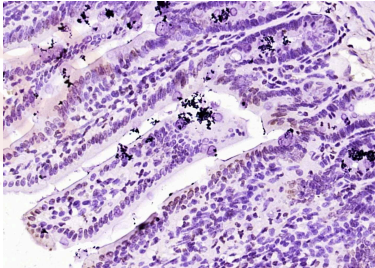
Heart (Mouse) Lysate at 40 µg

Primary: Anti-GATA6 at 1/300 dilution

Secondary: IRDye800CW Goat Anti-Rabbit IgG at 1/20000 dilution

Predicted band size: 60 kDa

Observed band size: 60 kDa



Application: IF,IHC-Fr,IHC-P,WB

Recommended WB: 1:500-2000; IHC-P: 1:100-500; IHC-Fr: 1:100-500; IF: 1:100-500

A DRUG SCREENING EXPERT

Properties

Stability & Storage: Store at -20°C or -80°C for 12 months. Avoid repeated freeze-thaw cycles.

Shipping: Shipping with blue ice.

Antigen Details

Immunogen: KLH conjugated synthetic peptide: human GATA6

Antigen Species: Human

Gene ID: 2627

Uniprot ID: Q92908

Synonyms: Transcription factor GATA-6;Gata binding factor 6;Transcription factor Gata 6;Gata binding protein 6

Biology Area: Tumor suppressors,Transcription factors/regulators,Endoderm,Zinc Finger,Endoderm

Research Background

GATA-6 (GATA binding factor 6) is zinc-finger transcription factor that binds DNA at GATA regions; Involved in gene regulation specifically in the gastric epithelium.

Cellular localization:Nuclear.

Tissue Specificity: gastric epithelium.

Inhibitor · Natural Compounds · Compound Libraries · Recombinant Proteins

This product is for Research Use Only· Not for Human or Veterinary or Therapeutic Use

Tel:781-999-4286 E_mail:info@targetmol.com Address:34 Washington Street,Wellesley Hills,MA 02481