

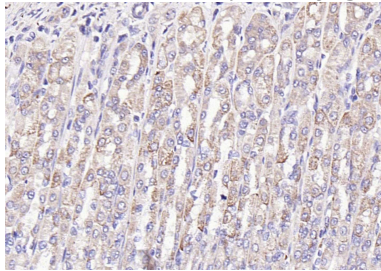
Anti-GAST Polyclonal Antibody

Product Details

Ig Type:	IgG
Reactivity:	Rat (predicted:Human,Mouse,Pig,Rabbit)
Molecular Weight:	Theoretical: 2.1/3.9/6/8 kDa.
Purification:	Protein A purified

Applications

Verified Activity: Paraformaldehyde-fixed, paraffin embedded (rat stomach); Antigen retrieval by boiling in sodium citrate buffer (pH6.0) for 15 min; Block endogenous peroxidase by 3% hydrogen peroxide for 20 min; Blocking buffer (normal goat serum) at 37°C for 30 min; Antibody incubation with (Gastrin) Polyclonal Antibody, Unconjugated (TMAB-00747) at 1:200 overnight at 4°C, followed by a conjugated secondary for 20 min and DAB staining.



Application:	IF,IHC-Fr,IHC-P
Recommended	IHC-P: 1:100-500; IHC-Fr: 1:100-500; IF: 1:100-500

Properties

Stability & Storage:	Store at -20°C or -80°C for 12 months. Avoid repeated freeze-thaw cycles.
Shipping:	Shipping with blue ice.

Antigen Details

Immunogen:	KLH conjugated synthetic peptide: human Gastrin
Antigen Species:	Human
Gene ID:	2520
Uniprot ID:	P01350
Synonyms:	Gastrin
Biology Area:	Hormones,Leukocyte recruitment,Blood,Hormones

Research Background

Gastrin is responsible for epithelial cell proliferation and differentiation. Gastrin regulates the action of parietal cells in secretion of gastric acid and growth factors essential for stomach maintenance. Gastrin maintains sodium ion homeostasis and controls body's blood pressure. Hypoxial conditions in in vitro and in vivo analysis may elevate the expression of gastrin hormone in cancer cells in order to promote angiogenesis. The only established clinical routine

A DRUG SCREENING EXPERT

use of gastrin RIA so far is in the diagnosis, localization, and therapeutic control of gastrinomas (Zollinger-Ellison or Z-E tumors).

Inhibitor · Natural Compounds · Compound Libraries · Recombinant Proteins

This product is for Research Use Only · Not for Human or Veterinary or Therapeutic Use

Tel:781-999-4286 E_mail:info@targetmol.com Address:34 Washington Street,Wellesley Hills,MA 02481