

GAPDH Loading Control Polyclonal Antibody 2

Product Details

Ig Type:	IgG
Reactivity:	Human,Mouse,Rat (predicted:Hamster)
Molecular Weight:	Theoretical: 38 kDa. Actual: 38 kDa.
Purification:	Protein A purified

Applications

1. Sample:

Lane 1: Cerebellum (Mouse) Lysate

Lane 2: Raw264.7 (Mouse) Cell Lysate

Lane 3: NIH/3T3 (Mouse) Cell Lysate

Lane 4: Cerebrum (Rat) Lysate

Lane 5: SH-SY5Y (Human) Cell Lysate

Lane 6: MCF-7 (Human) Cell Lysate

Primary: Anti-GAPDH (TMAB-00742) at 1/10000 dilution

Secondary: IRDye800CW Goat Anti-Rabbit IgG at 1/20000 dilution

Predicted band size: 38 kDa

Observed band size: 38 kDa

2. Sample:

Lane 1,4,7: Mouse Cerebellum tissue lysates

Lane 2,5,8: Rat Cerebellum tissue lysates

Lane 3,6,9: Human SH-SY5Y cell lysates

Primary: Anti-GAPDH (TMAB-00742) at 1/10000~1/100000 dilution

Secondary: IRDye800CW Goat Anti-Rabbit IgG at 1/20000 dilution

Predicted band size: 38 kDa

Observed band size: 36 kDa

Verified Activity:

3. Paraformaldehyde-fixed, paraffin embedded Mouse Testicles; Antigen retrieval by boiling in sodium citrate buffer (pH6.0) for 15 min; Antibody incubation with GAPDH Polyclonal Antibody, Unconjugated (TMAB-00742) at 1:200 overnight at 4°C, followed by conjugation to the SP Kit (Rabbit) and DAB staining.

4. Paraformaldehyde-fixed, paraffin embedded Rat Testicles; Antigen retrieval by boiling in sodium citrate buffer (pH6.0) for 15 min; Antibody incubation with GAPDH Polyclonal Antibody, Unconjugated (TMAB-00742) at 1:200 overnight at 4°C, followed by conjugation to the SP Kit (Rabbit) and DAB staining.

5. Paraformaldehyde-fixed, paraffin embedded Mouse Cerebrum; Antigen retrieval by boiling in sodium citrate buffer (pH6.0) for 15 min; Antibody incubation with GAPDH Polyclonal Antibody, Unconjugated (TMAB-00742) at 1:200 overnight at 4°C, followed by conjugation to the SP Kit (Rabbit) and DAB staining.

6. Paraformaldehyde-fixed, paraffin embedded Rat Cerebrum; Antigen retrieval by boiling in sodium citrate buffer (pH6.0) for 15 min; Antibody incubation with GAPDH Polyclonal Antibody, Unconjugated (TMAB-00742) at 1:200 overnight at 4°C, followed by conjugation to the SP Kit (Rabbit) and DAB staining.

7. Paraformaldehyde-fixed, paraffin embedded Rat Colon; Antigen retrieval by boiling in sodium citrate buffer (pH6.0) for 15 min; Antibody incubation with GAPDH Polyclonal Antibody, Unconjugated (TMAB-00742) at 1:200 overnight at 4°C, followed by conjugation to the SP Kit

(Rabbit) and DAB staining.

8. Paraformaldehyde-fixed, paraffin embedded Human Colon; Antigen retrieval by boiling in sodium citrate buffer (pH6.0) for 15 min; Antibody incubation with GAPDH Polyclonal Antibody, Unconjugated (TMAB-00742) at 1:200 overnight at 4°C, followed by conjugation to the SP Kit (Rabbit) and DAB staining.

9. Paraformaldehyde-fixed, paraffin embedded Human Liver Cancer; Antigen retrieval by boiling in sodium citrate buffer (pH6.0) for 15 min; Antibody incubation with GAPDH Polyclonal Antibody, Unconjugated (TMAB-00742) at 1:200 overnight at 4°C, followed by conjugation to the SP Kit (Rabbit) and DAB staining.

10. Paraformaldehyde-fixed, paraffin embedded Human Liver; Antigen retrieval by boiling in sodium citrate buffer (pH6.0) for 15 min; Antibody incubation with GAPDH Polyclonal Antibody, Unconjugated (TMAB-00742) at 1:200 overnight at 4°C, followed by conjugation to the SP Kit (Rabbit) and DAB staining.

11. Paraformaldehyde-fixed, paraffin embedded Human Spleen; Antigen retrieval by boiling in sodium citrate buffer (pH6.0) for 15 min; Antibody incubation with GAPDH Polyclonal Antibody, Unconjugated (TMAB-00742) at 1:200 overnight at 4°C, followed by conjugation to the SP Kit (Rabbit) and DAB staining.

12. Paraformaldehyde-fixed, paraffin embedded Human Kidney; Antigen retrieval by boiling in sodium citrate buffer (pH6.0) for 15 min; Antibody incubation with GAPDH Polyclonal Antibody, Unconjugated (TMAB-00742) at 1:200 overnight at 4°C, followed by conjugation to the SP Kit (Rabbit) and DAB staining.

13. Paraformaldehyde-fixed, paraffin embedded Human Breast Cancer; Antigen retrieval by boiling in sodium citrate buffer (pH6.0) for 15 min; Antibody incubation with GAPDH Polyclonal Antibody, Unconjugated (TMAB-00742) at 1:200 overnight at 4°C, followed by conjugation to the SP Kit (Rabbit) and DAB staining.

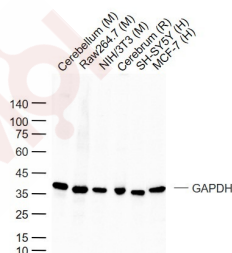
14. Paraformaldehyde-fixed, paraffin embedded Human Pancreas; Antigen retrieval by boiling in sodium citrate buffer (pH6.0) for 15 min; Antibody incubation with GAPDH Polyclonal Antibody, Unconjugated (TMAB-00742) at 1:200 overnight at 4°C, followed by conjugation to the SP Kit (Rabbit) and DAB staining.

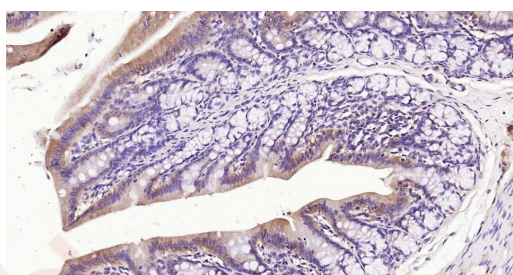
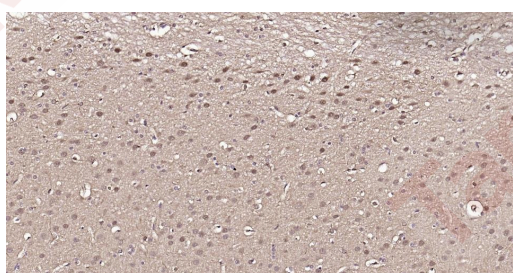
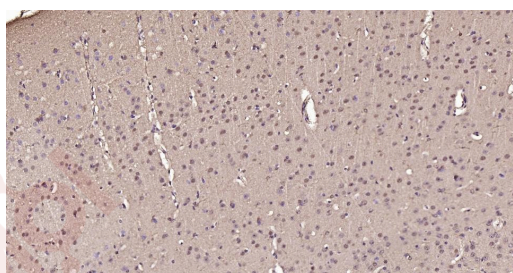
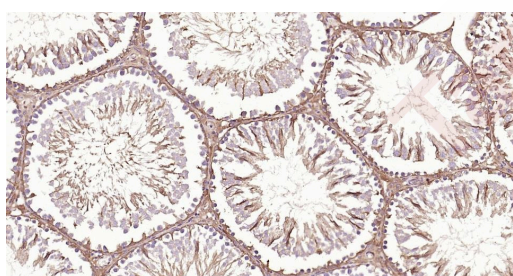
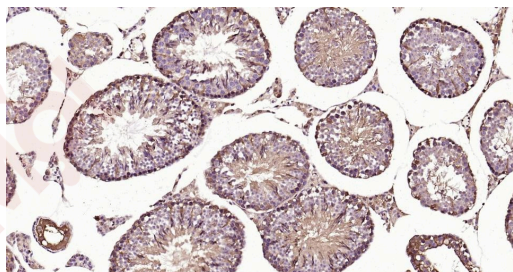
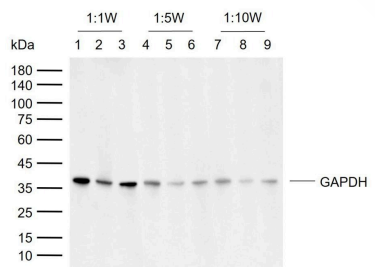
15. Paraformaldehyde-fixed, paraffin embedded Human Colon; Antigen retrieval by boiling in sodium citrate buffer (pH6.0) for 15 min; Antibody incubation with GAPDH Polyclonal Antibody, Unconjugated (TMAB-00742) at 1:200 overnight at 4°C. Followed by conjugated Goat Anti-Rabbit IgG antibody (red), DAPI (blue) was used to stain the cell nucleus.

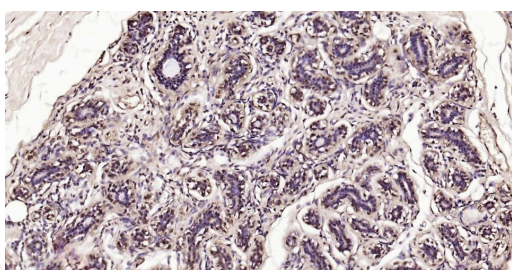
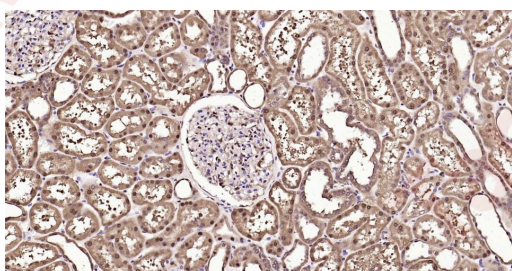
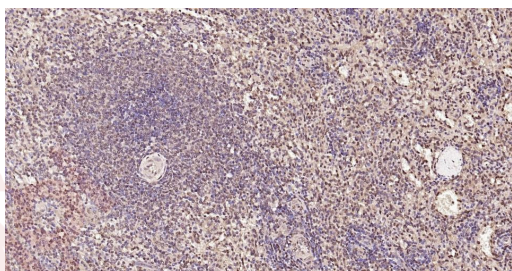
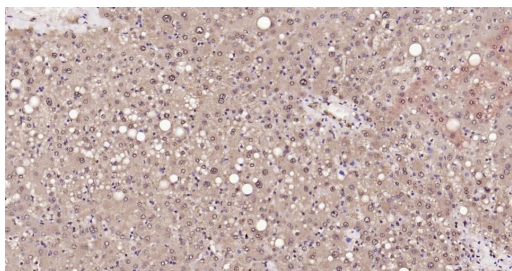
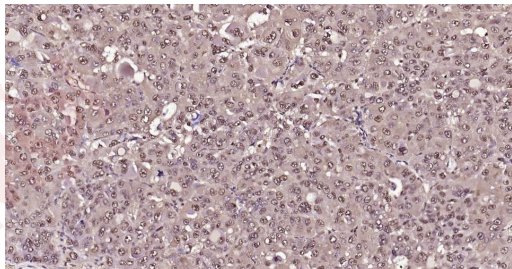
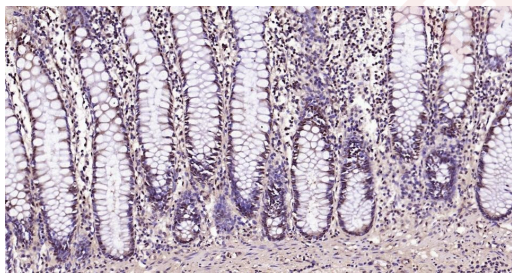
16. Paraformaldehyde-fixed, paraffin embedded Rat Kidney; Antigen retrieval by boiling in sodium citrate buffer (pH6.0) for 15 min; Antibody incubation with GAPDH Polyclonal Antibody, Unconjugated (TMAB-00742) at 1:100 overnight at 4°C. Followed by conjugated Goat Anti-Rabbit IgG antibody (red), DAPI (blue) was used to stain the cell nucleus.

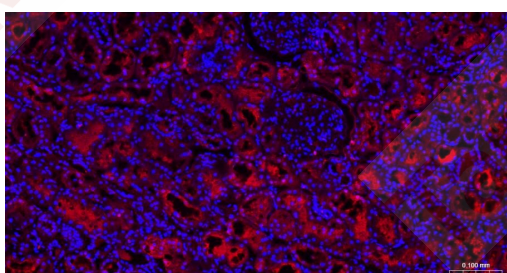
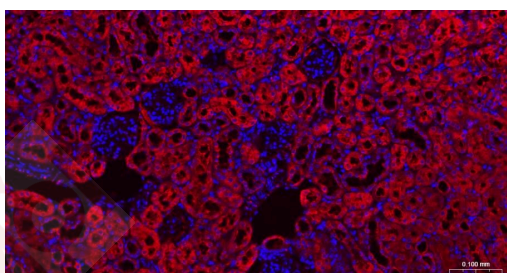
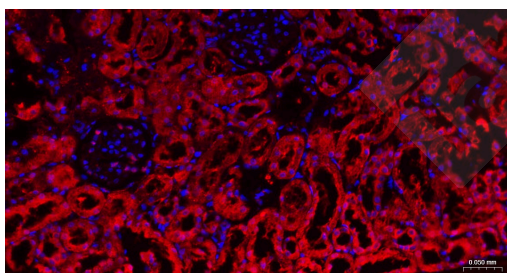
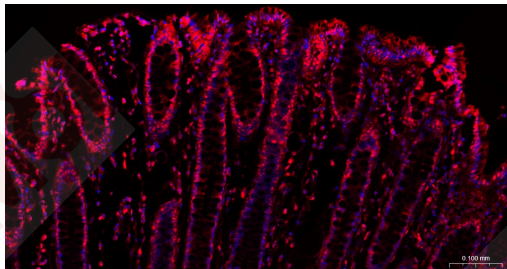
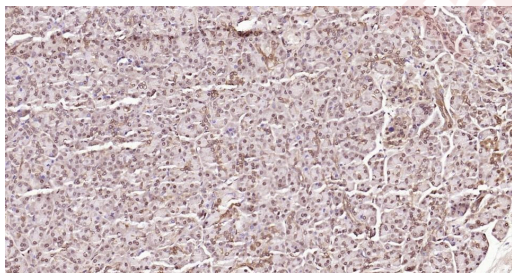
17. Paraformaldehyde-fixed, paraffin embedded Mouse Kidney; Antigen retrieval by boiling in sodium citrate buffer (pH6.0) for 15 min; Antibody incubation with GAPDH Polyclonal Antibody, Unconjugated (TMAB-00742) at 1:100 overnight at 4°C. Followed by conjugated Goat Anti-Rabbit IgG antibody (red), DAPI (blue) was used to stain the cell nucleus.

18. Paraformaldehyde-fixed, paraffin embedded Human Kidney; Antigen retrieval by boiling in sodium citrate buffer (pH6.0) for 15 min; Antibody incubation with GAPDH Polyclonal Antibody, Unconjugated (TMAB-00742) at 1:100 overnight at 4°C. Followed by conjugated Goat Anti-Rabbit IgG antibody (red), DAPI (blue) was used to stain the cell nucleus.









Application: ELISA,IF,IHC-Fr,IHC-P,WB

Recommended ELISA=1:5000-10000; IF=1:200-1000; IHC-Fr=1:200-1000; IHC-P=1:200-1000; WB=1:5000-50000

Properties

Stability & Storage: Store at -20°C or -80°C for 12 months. Avoid repeated freeze-thaw cycles.

Shipping: Shipping with blue ice.

Antigen Details

Immunogen:	Recombinant Protein: human GAPDH full length protein
Antigen Species:	Human
Gene ID:	2597
Uniprot ID:	P04406
Synonyms:	HEL-S-162eP;GAPD;glyceraldehyde-3-phosphate dehydrogenase;G3PD
Biology Area:	Energy Metabolism,Huntington's disease,Alzheimer's disease,Neurodegenerative disease, Cancer,Energy Metabolism,Carbohydrate metabolism,GAPDH,Metabolism of carbohydrates

Research Background

Glyceraldehyde 3 phosphate dehydrogenase (GAPDH) is well known as one of the key enzymes involved in glycolysis. As well as functioning as a glycolytic enzyme in cytoplasm, recent evidence suggests that mammalian GAPDH is also involved in a great number of intracellular processes such as membrane fusion, microtubule bundling, phosphotransferase activity, nuclear RNA export, DNA replication, and DNA repair. During the last decade a lot of data appeared concerning the role of GAPDH in different pathologies including prostate cancer progression, programmed neuronal cell death, age related neuronal diseases, such as Alzheimer's and Huntington's disease. GAPDH is expressed in all cells. It is constitutively expressed in almost all tissues at high levels. There are however some physiological factors such as hypoxia and diabetes that increase GAPDH expression in certain cell types. GAPDH molecule is composed of four 36kDa subunits.

Inhibitor · Natural Compounds · Compound Libraries · Recombinant Proteins

This product is for Research Use Only · Not for Human or Veterinary or Therapeutic Use

Tel:781-999-4286 E_mail:info@targetmol.com Address:34 Washington Street,Wellesley Hills,MA 02481