

Anti-Galectin-3/LGALS3 Polyclonal Antibody

Product Details

Ig Type:	IgG
Reactivity:	Human,Mouse (predicted:Rat,Dog)
Molecular Weight:	Theoretical: 29 kDa. Actual: 29 kDa.
Purification:	Protein A purified

Applications

1. Sample:

SW480 (Human) Cell Lysate at 40 µg

Primary: Anti-Galectin 3 (TMAB-00735) at 1/300 dilution

Secondary: IRDye800CW Goat Anti-Rabbit IgG at 1/20000 dilution

Predicted band size: 29 kDa

Observed band size: 29 kDa

2. Sample:

MCF-7 Cell (Human) Lysate at 40 µg

NIH/3T3 Cell (Mouse) Lysate at 40 µg

Primary: Anti-Galectin 3 (TMAB-00735) at 1/300 dilution

Secondary: IRDye800CW Goat Anti-Rabbit IgG at 1/20000 dilution

Predicted band size: 29 kDa

Observed band size: 29 kDa

3. Blank control: A431. Primary Antibody (green line): Rabbit Anti-Galectin 3 antibody (TMAB-00735)

Dilution: 1 µg/10⁶ cells;

Isotype Control Antibody (orange line): Rabbit IgG.

Secondary Antibody: Goat anti-rabbit IgG-AF647

Dilution: 1 µg/test.

Verified Activity:

Protocol

The cells were fixed with 4% PFA (10 min at room temperature) and then permeabilized with 90% ice-cold methanol for 20 min at -20°C. The cells were then incubated in 5% BSA to block non-specific protein-protein interactions for 30 min at room temperature. Cells stained with Primary Antibody for 30 min at room temperature. The secondary antibody used for 40 min at room temperature.

4. Sample:

Lane 1: Siha (Human) Cell Lysate at 30 µg

Lane 2: U87MG (Human) Cell Lysate at 30 µg

Lane 3: A431 (Human) Cell Lysate at 30 µg

Lane 4: LOVO (Human) Cell Lysate at 30 µg

Lane 5: MCF-7 (Human) Cell Lysate at 30 µg

Lane 6: Hela (Human) Cell Lysate at 30 µg

Primary:

Anti-Galectin 3 (TMAB-00735) at 1/1000 dilution

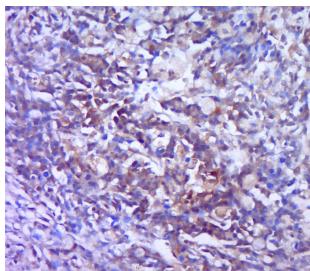
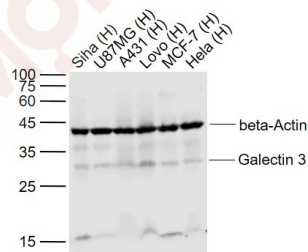
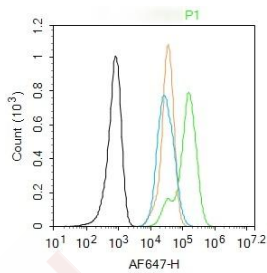
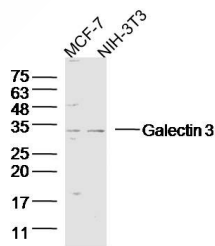
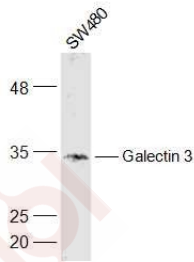
Anti-beta-Actin at 1/2000 dilution

Secondary: IRDye800CW Goat Anti-Rabbit IgG at 1/20000 dilution

Predicted band size: 26 kDa

Observed band size: 28 kDa

5. Paraformaldehyde-fixed, paraffin embedded (human gastric carcinoma); Antigen retrieval by boiling in sodium citrate buffer (pH6.0) for 15 min; Block endogenous peroxidase by 3% hydrogen peroxide for 20 min; Blocking buffer (normal goat serum) at 37°C for 30 min; Antibody incubation with (Galectin 3) Polyclonal Antibody, Unconjugated (TMAB-00735) at 1:400 overnight at 4°C, followed by a conjugated secondary for 20 min and DAB staining.



Application: FCM,IF,IHC-Fr,IHC-P,WB

Recommended WB: 1:500-2000; IHC-P: 1:100-500; IHC-Fr: 1:100-500; IF: 1:100-500; FCM: 1ug/Test

A DRUG SCREENING EXPERT

Properties

Stability & Storage: Store at -20°C or -80°C for 12 months. Avoid repeated freeze-thaw cycles.

Shipping: Shipping with blue ice.

Antigen Details

Immunogen: KLH conjugated synthetic peptide: human Galectin 3

Antigen Species: Human

Gene ID: 3958

Uniprot ID: P17931

Synonyms: GALBPCBP35;AGE-R3;MAC2GAL3;LGALS2;LGALS3;GAL3;GALIG;CBP35;galactin-3;Mac-2;Lectin L-29;Galectin3;L31;L29;Gal-3

Biology Area: Nuclear Proteins, Cell differentiation

Research Background

This gene encodes a member of the galectin family of carbohydrate binding proteins. Members of this protein family have an affinity for beta-galactosides. The encoded protein is characterized by an N-terminal proline-rich tandem repeat domain and a single C-terminal carbohydrate recognition domain. This protein can self-associate through the N-terminal domain allowing it to bind to multivalent saccharide ligands. This protein localizes to the extracellular matrix, the cytoplasm and the nucleus. This protein plays a role in numerous cellular functions including apoptosis, innate immunity, cell adhesion and T-cell regulation. The protein exhibits antimicrobial activity against bacteria and fungi. Alternate splicing results in multiple transcript variants.[provided by RefSeq, Oct 2014]

Inhibitor · Natural Compounds · Compound Libraries · Recombinant Proteins

This product is for Research Use Only · Not for Human or Veterinary or Therapeutic Use

Tel: 781-999-4286 E_mail: info@targetmol.com Address: 34 Washington Street, Wellesley Hills, MA 02481