

Anti-GADD45A Polyclonal Antibody

Product Details

Ig Type:	IgG
Reactivity:	Human,Mouse,Rat (predicted:Chicken,Pig,Cow)
Molecular Weight:	Theoretical: 18 kDa. Actual: 18 kDa.
Purification:	Protein A purified

Applications

1. Paraformaldehyde-fixed, paraffin embedded (Mouse brain); Antigen retrieval by boiling in sodium citrate buffer (pH6.0) for 15 min; Block endogenous peroxidase by 3% hydrogen peroxide for 20 min; Blocking buffer (normal goat serum) at 37°C for 30 min; Antibody incubation with (GADD45) Polyclonal Antibody, Unconjugated (TMAB-00733) at 1:400 overnight at 4°C, followed by operating according to SP Kit (Rabbit) instructions and DAB staining.

2. Tissue/cell: rat brain tissue; 4% Paraformaldehyde-fixed and paraffin-embedded; Antigen retrieval: citrate buffer (0.01M, pH6.0), Boiling bathing for 15 min; Block endogenous peroxidase by 3% Hydrogen peroxide for 30 min; Blocking buffer (normal goat serum) at 37°C for 20 min;

Incubation: Anti-GADD45 Polyclonal Antibody, Unconjugated (TMAB-00733) 1:200, overnight at 4°C, followed by conjugation to the secondary antibody and DAB staining.

3. Sample:

Lane1: Brain (Rat) Lysate at 30 µg

Lane2: Kidney (Rat) Lysate at 30 µg

Primary: Anti-GADD45 (TMAB-00733) at 1:200 dilution;

Secondary: HRP conjugated Goat-Anti-Rabbit IgG (secondary antibody) at 1: 3000 dilution;

Predicted band size: 18 kDa

Observed band size: 18 kDa

We are unsure as to the identity of these extra bands

Verified Activity:

4. Tissue/cell: A431 cell; 4% Paraformaldehyde-fixed; Triton X-100 at room temperature for 20 min; Blocking buffer (normal goat serum) at 37°C for 20 min; Antibody incubation with (GADD45) Polyclonal Antibody, Unconjugated (TMAB-00733) 1:200, 90 minutes at 37°C; followed by a conjugated Goat Anti-Rabbit IgG antibody at 37°C for 90 minutes, DAPI (5 µg/ml, blue) was used to stain the cell nucleus.

5. Tissue/cell: U-2OS cell; 4% Paraformaldehyde-fixed; Triton X-100 at room temperature for 20 min; Blocking buffer (normal goat serum) at 37°C for 20 min; Antibody incubation with (GADD45) Polyclonal Antibody, Unconjugated (TMAB-00733) 1:200, 90 minutes at 37°C; followed by a conjugated Goat Anti-Rabbit IgG antibody at 37°C for 90 minutes, DAPI (5 µg/ml, blue) was used to stain the cell nucleus.

6. Paraformaldehyde-fixed, paraffin embedded (Human liver carcinoma); Antigen retrieval by boiling in sodium citrate buffer (pH6.0) for 15 min; Block endogenous peroxidase by 3% hydrogen peroxide for 20 min; Blocking buffer (normal goat serum) at 37°C for 30 min; Antibody incubation with (GADD45) Polyclonal Antibody, Unconjugated (TMAB-00733) at 1:400 overnight at 4°C, followed by operating according to SP Kit (Rabbit) instructions and DAB staining.

7. Blank control: A431. Primary Antibody (green line): Rabbit Anti-GADD45 antibody (TMAB-00733)

Dilution: 1 µg/10⁶ cells;

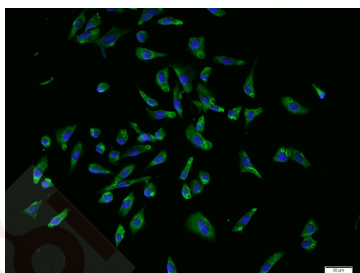
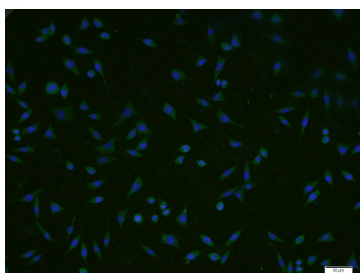
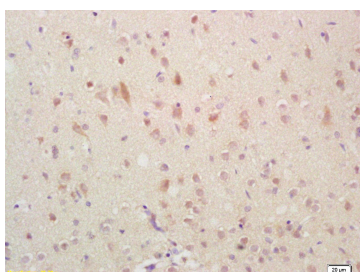
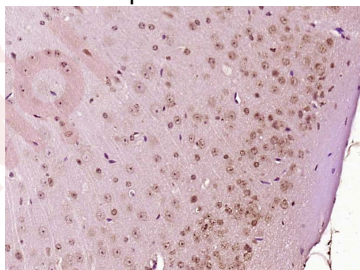
Isotype Control Antibody (orange line): Rabbit IgG.

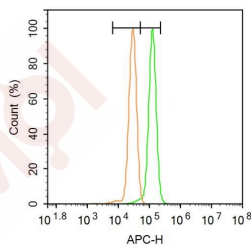
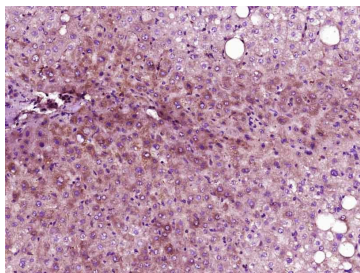
Secondary Antibody: Goat anti-rabbit IgG-AF647

Dilution: 1 µg/test.

Protocol

The cells were fixed with 4% PFA (10 min at room temperature) and then permeabilized with 0.1% PBST for 20 min at room temperature. The cells were then incubated in 5% BSA to block non-specific protein-protein interactions for 30 min at room temperature. Cells stained with Primary Antibody for 30 min at room temperature. The secondary antibody used for 40 min at room temperature.





Application: FCM, ICC/IF, IHC-Fr, IHC-P, WB

Recommended WB: 1:500-2000; IHC-P: 1:100-500; IHC-Fr: 1:100-500; ICC/IF: 1:100-500; IF: 1:100-500; FCM: 3ug/Test

Properties

Stability & Storage: Store at -20°C or -80°C for 12 months. Avoid repeated freeze-thaw cycles.

Shipping: Shipping with blue ice.

Antigen Details

Immunogen: KLH conjugated synthetic peptide: human GADD45

Antigen Species: Human

Gene ID: 1647

Uniprot ID: P24522

Synonyms: DDIT1; GADD45; growth arrest and DNA-damage-inducible, alpha; growth arrest and DNA-damage-inducible, α

Biology Area: Base Excision Repair

Research Background

This gene is a member of a group of genes whose transcript levels are increased following stressful growth arrest conditions and treatment with DNA-damaging agents. The protein encoded by this gene responds to environmental stresses by mediating activation of the p38/JNK pathway via MTK1/MEKK4 kinase. The DNA damage-induced transcription of this gene is mediated by both p53 dependent and independent mechanisms.

Inhibitor · Natural Compounds · Compound Libraries · Recombinant Proteins

This product is for Research Use Only · Not for Human or Veterinary or Therapeutic Use

Tel: 781-999-4286 E_mail: info@targetmol.com Address: 34 Washington Street, Wellesley Hills, MA 02481