

Anti-GABRA2 Polyclonal Antibody

Product Details

Ig Type:	IgG
Reactivity:	Mouse,Rat (predicted:Human,Dog,Pig,Cow,Horse,Rabbit)
Molecular Weight:	Theoretical: 48 kDa. Actual: 48 kDa.
Purification:	Protein A purified

Applications

1. Tissue/cell: rat brain tissue; 4% Paraformaldehyde-fixed and paraffin-embedded; Antigen retrieval: citrate buffer (0.01M, pH6.0), Boiling bathing for 15 min; Block endogenous peroxidase by 3% Hydrogen peroxide for 30 min; Blocking buffer (normal goat serum) at 37°C for 20 min; Incubation: Anti-GABRA2 Polyclonal Antibody, Unconjugated (TMAB-00730) 1:200, overnight at 4°C, followed by conjugation to the secondary antibody and DAB staining.

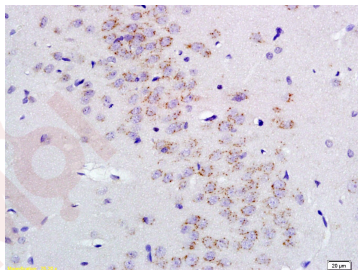
2. Sample: Cerebrum (mouse) Lysate at 40 µg
Primary: Anti-GABRA2 (TMAB-00730) at 1/300 dilution
Secondary: IRDye800CW Goat Anti-Rabbit IgG at 1/20000 dilution
Predicted band size: 48 kDa
Observed band size: 50 kDa

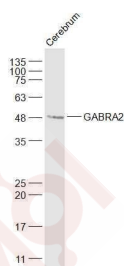
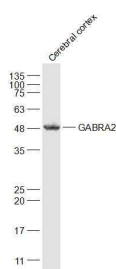
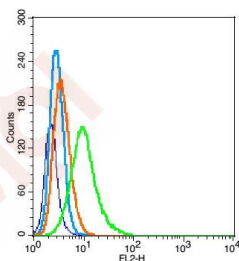
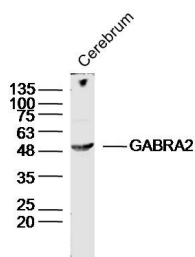
Verified Activity:

3. Blank control (blue): RSC96 (fixed with 2% paraformaldehyde (10 min)). Primary Antibody: Rabbit Anti-GABRA2 antibody (TMAB-00730), Dilution: 1 µg in 100 µL 1X PBS containing 0.5% BSA; Isotype Control Antibody: Rabbit IgG (orange), used under the same conditions); Secondary Antibody: Goat anti-rabbit IgG-Pe (white blue), Dilution: 1:200 in 1 X PBS containing 0.5% BSA.

4. Sample:
Cerebral cortex (Rat) Lysate at 40 µg
Primary: Anti-GABRA2 (TMAB-00730) at 1/1000 dilution
Secondary: IRDye800CW Goat Anti-Rabbit IgG at 1/20000 dilution
Predicted band size: 48 kDa
Observed band size: 48 kDa

5. Sample:
Cerebrum (Mouse) Lysate at 40 µg
Primary: Anti-GABRA2 (TMAB-00730) at 1/1000 dilution
Secondary: IRDye800CW Goat Anti-Rabbit IgG at 1/20000 dilution
Predicted band size: 48 kDa
Observed band size: 48 kDa





Application: FCM,IF,IHC-Fr,IHC-P,WB

Recommended WB: 1:500-2000; IHC-P: 1:100-500; IHC-Fr: 1:100-500; IF: 1:100-500; FCM: 1µg/Test

Properties

Stability & Storage: Store at -20°C or -80°C for 12 months. Avoid repeated freeze-thaw cycles.

Shipping: Shipping with blue ice.

Antigen Details

Immunogen: KLH conjugated synthetic peptide: human GABRA2

Antigen Species: Human

Gene ID: 2555

Uniprot ID: P47869

Synonyms: GBRA2;gamma-aminobutyric acid receptor subunit alpha-2;gamma aminobutyric acid A receptor alpha 2;gamma aminobutyric acid receptor subunit alpha 2;gamma aminobutyric acid(GABA) A receptor alpha 2;GABRA2;GABRA 2;GABA A Receptor a2;GABA;gamma aminobutyric acid receptor alpha 2 subunit;GABA(A) receptor subunit alpha 2;GABR A2;GABA A Receptor alpha 2;GABA A receptor subunit alpha 2

Research Background

GABA is the major inhibitory neurotransmitter in the mammalian brain where it acts at GABA-A receptors, which are ligand-gated chloride channels. Chloride conductance of these channels can be modulated by agents such as benzodiazepines that bind to the GABA-A receptor. At least 16 distinct subunits of GABA-A receptors have been identified. Alternatively spliced transcript variants encoding the same protein have been found for this gene. [provided by RefSeq, Jul 2008]

Inhibitor · Natural Compounds · Compound Libraries · Recombinant Proteins

This product is for Research Use Only · Not for Human or Veterinary or Therapeutic Use

Tel:781-999-4286 E_mail:info@targetmol.com Address:34 Washington Street,Wellesley Hills,MA 02481